

## **Historic, Archive Document**

Do not assume content reflects current scientific knowledge, policies, or practices.



# COLE'S

Price List to the Trade

---

FALL 1953

---



*Plant America!*

---

*"Everything That's Good and Hardy"*

---

1881 - 1953

**THE COLE NURSERY CO.**

Painesville, Ohio

Phone 2-3121

# TERMS and CONDITIONS of SALE

**PRICES** are F. O. B. nursery at Painesville, Ohio. Any boxing or baling necessary is charged at near cost. Prices in this list are subject to market changes and cancel those in all previous price lists.

**TERMS.** 1% 10 days; net 30 days to those having established credit with us. Cash orders receive 2% off. Be sure to include enough to cover packing, so as to eliminate C. O. D. costs. Overpayments returned promptly. C. O. D. orders must be accompanied by at least 1/3 of the amount of the order.

**CLAIMS** for rejections, shortages, or other reason will be entertained only if made within 5 days after arrival of goods.

**GUARANTEE.** We guarantee all stock to be true to name and free of injurious insects or disease. All goods travel at consignee's risk; we assume no responsibility after they leave the nursery. It is mutually agreed that in no case shall we be held liable for a greater amount than the purchase price of any item.

**SHIPMENTS.** Please state routing of your shipments and method you prefer. Where no instructions are given, we will ship according to the situation, as we think best serves your interest.

## Prices For Boxing and Packing

	Per Ft. over 6 Feet	Per Ft. 6 Feet and Less
30 x 30 .....	\$.80	\$.85
28 x 28 .....	.75	.80
24 x 24 .....	.65	.70
20 x 20 .....	.55	.60
16 x 16 .....	.45	.50
14 x 14 .....	.40	.43
12 x 12 .....	.35	.38

If Paper Lined, add 10%  
Small Boxes, 50c to \$1.50  
according to size.

### BALES

Minimum Charge .....\$0.75

## TRUCKING

During planting season we make several deliveries weekly to Cleveland and vicinity and frequent deliveries to other cities within 400 miles of Painesville. Rates reasonable.

# Shade and Ornamental Trees

The size immediately following the description indicates approximate height at maturity.

## LARGE B & B SHADE TREES

We are specialists in balling and handling large shade trees up to 7" caliper. Our stock and workmanship is second to none. We would be pleased to quote prices for your special requirements on request or you may refer to inside back cover for charges.

	1-4 Each	5-24 Each	25 Up Each
<b>ACER dasycarpum (saccharinum)—60'</b>		<b>Silver Maple</b>	
6 to 8' .....	\$ 2.25	\$ 1.75	\$ 1.50
8 to 10' .....	2.75	2.25	2.00
1¼ to 1½" .....	3.70	3.15	2.85
1½ to 1¾" .....	5.00	4.40	4.00
1¾ to 2" .....	6.25	5.50	5.00
2 to 2½" .....	8.50	7.50	....
<b>d. "Beebe Cutleaf Weeping"</b>			
New superior variety. Horizontal branching habit.			
1¼ to 1¾" .....	5.25	4.75	....
<b>d. lutea. (New) — 60'</b>		<b>Golden Silver Maple</b>	
Bark orange on young branches. Fall color yellow.			
8 to 10' .....	3.25	2.75	2.50
1¼ to 1½" .....	4.10	3.60	3.25
1½ to 2" .....	5.75	5.00	4.50
2½ to 3" .....	13.25	12.00	....
<b>d. pyramidale — 60'</b>		<b>Pyramidal Silver Maple</b>	
Improved budded strain. Symmetrical, full tree.			
6 to 8' .....	2.70	2.25	2.00
8 to 10' .....	3.50	3.00	2.75
1¼ to 1½" .....	5.00	4.40	4.00
<b>palmatum — 14'</b>		<b>Japanese Maple</b>	
10 to 12' (28" Ball) Specimens .....	47.50	42.50	....
12 to 14' (32" Ball) Specimens .....	60.00	55.00	....
<b>p. atropurpureum — 10'</b>		<b>Bloodleaf Japanese Maple</b>	
15 to 18" (11" Ball) .....	6.25	5.50	....
1½ to 2' (12" Ball) .....	7.50	6.60	....
2 to 2½' (13" Ball) .....	9.35	8.25	....

Cole's Shade Trees are planted on 3 x 7 foot spacing, consequently have room for proper development of root, body, and top. Also allows our frequent root pruning with power equipment.

	1-4 Each	5-24 Each	25 Up Each
<b>ACER (Continued)</b>			
<b>platanoides — 50'</b>		<b>Norway Maple</b>	
8 to 10'	\$ 5.75	\$ 5.00	\$ 4.50
1¼ to 1½"	7.00	6.25	.....
1½ to 1¾"	8.80	7.90	.....
1¾ to 2"	10.50	9.50	.....
2 to 2½"	14.40	13.25	.....
3 to 3½"	28.50	26.00	.....
<b>p. columnare — 50'</b>		<b>Columnar Norway Maple</b>	
6 to 7'	7.25	6.35	5.75
7 to 8'	8.00	7.00	6.40
8 to 9'	10.00	9.00	.....
<b>p. schwedleri nigra</b>		<b>New Crimson King Maple</b>	
Plant Patent No. 735			
6 to 7' whips (Spring only)	3.25	2.75	2.50
6 to 7' branched	9.00	8.00	.....
7 to 8' branched	10.50	9.50	.....
<b>p. schwedleri.</b>		<b>Purple Norway Maple</b>	
1½ to 1¾"	12.25	11.00	.....
1¾ to 2"	14.00	12.65	.....
2 to 2½"	20.00	18.50	.....
<b>rubrum — 50'</b>		<b>Red or Scarlet Maple</b>	
6 to 8'	4.10	3.60	3.25
8 to 10'	4.75	4.25	3.85
1¼ to 1½"	5.85	5.25	4.75
5 to 6"	48.00	44.00	40.00
6 to 7"	63.00	57.00	.....
<b>saccharum. — 60'</b>		<b>Sugar or Rock Maple</b>	
6 to 8'	3.80	3.30	3.00
8 to 10'	5.00	4.40	4.00
1¼ to 1½"	6.25	5.50	5.00
1½ to 1¾"	8.00	7.15	6.50
1¾ to 2"	9.70	8.50	7.75
2 to 2½"	14.00	12.65	11.50
2½ to 3"	21.00	18.75	17.00
5 to 6"	50.00	45.00	.....
6 to 7"	63.00	57.00	.....
<b>AESCULUS hippocastanum. — 60'</b>		<b>Horsechestnut</b>	
6 to 8'	4.25	3.75	.....
1½ to 2"	6.60	5.75	.....
2 to 2½"	12.20	11.00	.....
<b>pavia. — 30'</b>		<b>Red Buckeye</b>	
2 to 3'	4.35	3.85	3.50
3 to 4'	5.50	5.00	4.50
4 to 5'	6.75	.....	.....
<b>AILANTHUS altissima (glandulosa). — 50'</b>		<b>Tree of Heaven</b>	
6 to 8'	3.25	2.75	2.50
8 to 10'	4.35	3.85	3.50
1½ to 2"	5.75	5.00	4.50
2 to 2½"	7.50	6.60	6.00
2½ to 3"	10.25	9.10	8.25



Cole's perfect Sugar Maples — widely spaced in 7-foot rows.  
The root systems are fully as good as the tops.

	1-4 Each	5-24 Each	25 Up Each
<b>ARALIA spinosa. — 25'</b>	<b>Devil's Walking Stick</b>		
5 to 6' .....	\$ 1.75	\$ 1.50	\$ 1.25
6 to 8' .....	2.50	2.00	1.75
<b>BETULA alba (pendula). Clump form.</b>	<b>European White Birch</b>		
4 to 5' (Spring only) .....	2.70	2.25	2.00
5 to 6' (18" ball extra) .....	6.25	5.50	.....
6 to 8' (20" ball extra) .....	7.75	7.00	.....
<b>a. fastigiata.</b>	<b>Fastigate European Birch</b>		
1¼ to 1½" (22" ball extra) .....	9.40	8.25	7.50
1½ to 1¾" (24" ball extra) .....	11.75	10.45	9.50
<b>a. laciniata. — 35'</b>	<b>Cutleaf European Birch</b>		
6 to 7' (Spring only) .....	3.50	3.00	2.75
1¼ to 1½" (22" ball extra) .....	7.75	7.00	6.40
1½ to 1¾" (24" ball extra) .....	10.00	9.00	8.20
<b>papyrifera. Clump form.</b>	<b>Paper Birch</b>		
5 to 6', 3 stem (18" ball extra) .....	6.25	5.50	5.00
6 to 8', 3 stem (20" ball extra) .....	7.75	7.00	6.40
8 to 10', 3 stem (24" ball extra) .....	10.00	9.00	8.20
For 2-stem clumps deduct 25%.			
<b>CASTANEA hybrida. — 60'</b>	<b>Hybrid American Sweet Chestnut</b>		
Blight resistant. Bears early.			
6 to 8' .....	10.20	9.10	.....
8 to 10' .....	12.20	11.00	10.00
2 to 2½" .....	17.50	15.50	14.00
2½ to 3" .....	20.50	18.50	16.50
3 to 4" .....	25.00	22.50	.....

	1-4 Each	5-24 Each	25 Up Each
<b>CELTIS occidentalis. — 45'</b>			<b>Hackberry</b>
2 to 2½" .....	\$14.00	\$12.50	.....
2½ to 3" .....	16.25	14.50	.....
3 to 3½" .....	21.00	18.75	\$17.00
3½ to 4" .....	24.50	22.00	20.00
4 to 5" .....	33.50	30.00	27.00
<b>CERCIS canadensis. — 40'</b>			<b>Eastern Redbud</b>
4 to 5' (15" Ball) .....	4.50	4.00	3.65
5 to 6' (16" Ball) .....	7.50	6.60	6.00
6 to 7' (18" Ball) .....	9.25	8.20	.....
<b>CORNUS florida. — 20'</b>			<b>White Flowering Dogwood</b>
A few specimen clumps and light pink-flowered trees are available. Prices upon application.			
3 to 4' (13" Ball) .....	3.85	3.30	3.00
4 to 5' (15" Ball) .....	5.25	4.75	4.30
5 to 6' (16" Ball) .....	6.90	6.00	5.50
6 to 8' (20" Ball) .....	12.20	11.00	.....
8 to 10' (22" Ball) .....	16.25	14.50	.....
10 to 12' (24" Ball) .....	25.00	.....	.....
12 to 14' (28" Ball) .....	35.00	.....	.....
<b>CRATAEGUS calpodendron (tomentosa). — 15'</b>			<b>Pear Hawthorn</b>
<b>nitida. — 15'</b>			<b>Glossy Hawthorn</b>
<b>oxycantha. — 20'</b>			<b>English Hawthorn</b>
<b>punctata. — 25'</b>			<b>Dotted Hawthorn</b>
Prices above varieties:			
4 to 5' (16" Ball) .....	6.90	6.00	5.50
5 to 6' (18" Ball) .....	9.40	8.25	7.50
6 to 8' (20" Ball) .....	12.20	11.00	10.00
<b>oxycantha pauli. — 15'</b>			<b>Paul's Double Scarlet Hawthorn</b>
5 to 6' (Spring only) .....	3.85	3.30	3.00
6 to 7' (20" Ball) .....	11.15	9.90	9.00
7 to 8' (21" Ball) .....	13.30	12.00	11.00
8 to 9' (22" Ball) .....	17.50	15.50	14.00
<b>phaenopyrum (cordata). — 20'</b>			<b>Washington Hawthorn</b>
3 to 4' (15" Ball) .....	5.40	4.70	4.25
4 to 5' (16" Ball) .....	6.90	6.00	5.50
5 to 6' (18" Ball) .....	9.40	8.25	.....
8 to 10' (22" Ball) .....	18.25	16.50	.....
10 to 12' (25" Ball) .....	25.50	23.00	21.00
12 to 14' (28" Ball) .....	33.50	30.00	.....
<b>DIOSPYROS virginiana. — 15'</b>			<b>Common Persimmon</b>
2 to 2½" .....	14.00	12.50	.....
2½ to 3" .....	20.00	.....	.....
3 to 4" .....	30.00	.....	.....
<b>FRAXINUS pennsylvanica (lanceolata). — 70'</b>			<b>Green Ash</b>
1½ to 2" .....	6.30	5.50	5.00
2 to 2½" .....	9.50	8.50	7.50
2½ to 3" .....	13.00	11.00	10.00
3 to 3½" .....	16.50	15.00	.....



	1-4 Each	5-24 Each	25 Up Each
<b>GINKGO biloba. — 50'</b>		<b>Maidenhair Tree</b>	
6 to 8' .....	\$ 4.35	\$ 3.85	
8 to 10' .....	6.30	5.50	\$ 5.00
1¼ to 1½" .....	7.75	7.00	
1½ to 1¾" .....	10.00	9.00	8.00
1¾ to 2" .....	12.50	11.00	10.00
2 to 2½" .....	16.00	14.00	
2½ to 3" .....	20.50	18.50	

	Sentry	Maidenhair	Tree
<b>fastigiata. — 50'</b>			
8 to 10' .....	10.00	9.00	
1¼ to 1½" .....	13.00	11.50	
1½ to 1¾" .....	15.50	14.00	
1¾ to 2" .....	19.25	17.50	
2 to 2½" .....	24.50	22.00	

**"MORaine THORNLESS HONEYLOCUST"**  
Plant Patent No. 836

New tree sensation. Round-headed when young, but tall and vase shaped when older. Rapid grower. Clean—no seed pods or thorns. Hardy and thrives under city conditions in any soil. Insect and disease-resistant. All individually staked to provide straightest stems possible.

	Each	10 Up	50 Up
6 to 7' branched .....	\$ 4.50	\$ 4.00	\$ 3.65
7 to 8' branched .....	6.00	5.25	4.75
8 to 10', 1 to 1¼" .....	9.00	7.75	7.00
1¼ to 1½" .....	12.00	11.00	10.00

**COLE'S NEW SUNBURST\* LOCUST**

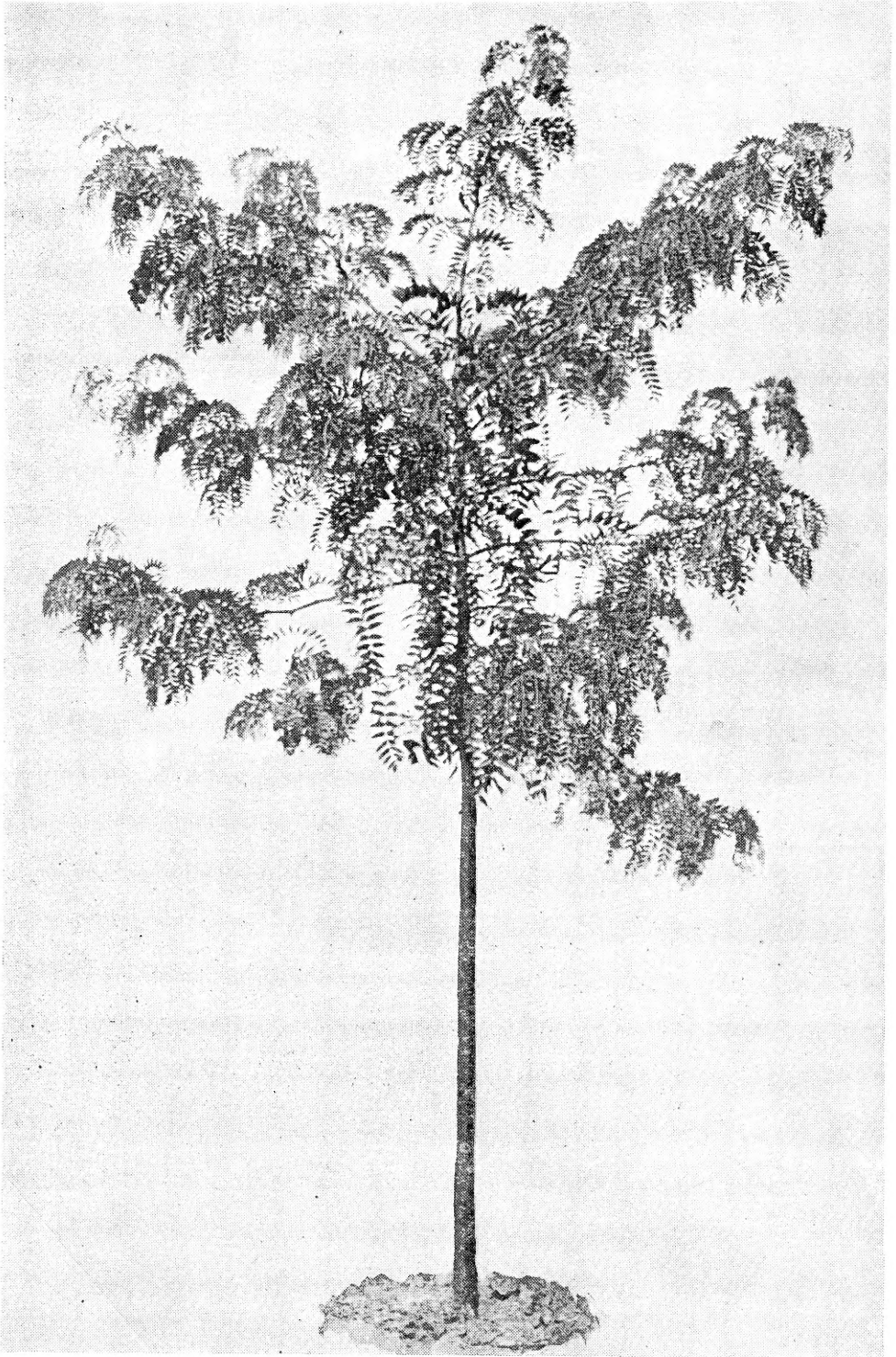
Patent Pending

(*Gleditsia triacanthos inermis aurea*)

The greatest new tree since Crimson King Maple. Brightest golden-bronze foliage of any plant we know. Completely free of thorns and is even more resistant to insects than Common Honeylocust. Tree is well-formed, symmetrical and broadly pyramidal with excellent spreading branching habit. Sunburst's brilliant coloring is limited to 8 or 10 inches of branch tips. Here is a colored plant that won't be objectionable in any landscape.

**To Be Introduced Spring 1954**

\* Trade Mark



Cole's Honeylocusts are root-pruned or transplanted every second year. Their quality is second to none. Picture shows a 2-year top of Cole's Selected Thornless Honeylocust.

	1-4 Each	5-24 Each	25 Up Each
<b>GLEDITSIA Continued</b>			
<b>triacanthos. — 60'</b>	<b>Common Honeylocust</b>		
1½ to 1¾" .....	\$6.90	\$6.00	\$5.50
1¾ to 2" .....	9.00	7.75	7.00
2 to 2½" .....	11.15	9.90	9.00
<b>triacanthos inermis. — 50'</b>	<b>Thornless Honeylocust</b>		
1¼ to 1½" .....	6.90	6.00	5.50
1½ to 1¾" .....	9.25	8.25	7.50
1¾ to 2" .....	11.15	9.90	9.00
2 to 2½" .....	14.75	13.25	12.00
<b>KOELREUTERIA paniculata. — 25'</b>			
	<b>Goldenrain Tree</b>		
3 to 4' .....	3.50	3.00	.....
4 to 5' .....	4.25	3.75	.....
5 to 6' .....	5.75	5.00	.....
<b>LABURNUM vossi. — 18'</b>			
	<b>Waterer Laburnum</b>		
4 to 5' .....	5.20	.....	.....
5 to 6' .....	6.25	.....	.....
6 to 7' .....	7.90	.....	.....
<b>LIQUIDAMBAR styraciflua. — 50'</b>			
	<b>Sweet Gum</b>		
2½ to 3" Specimens .....	18.00	16.25	.....
3 to 3½" Specimens .....	22.00	20.00	18.00
3½ to 4" Specimens .....	27.00	24.25	22.00
4" to 5" Specimens .....	35.00	31.00	28.00
<b>LIRIODENDRON tulipifera. — 80'</b>			
	<b>Tuliptree</b>		
6 to 8' .....	3.80	3.30	3.00
8 to 10' .....	5.00	4.40	4.00
1¼ to 1½" .....	6.30	5.50	5.00
1½ to 1¾" .....	7.50	6.60	6.00
1¾ to 2" .....	9.00	8.00	.....
2 to 2½" .....	12.00	11.00	.....
<b>MAGNOLIA liliflora nigra (soulangeana nigra). — 20'</b>			
	<b>Purple Lily Magnolia</b>		
Plants far heavier than normal and a real bargain.			
2 to 2½' Heavy (13" Ball).....	3.25	2.75	2.50
2½ to 3' Heavy (14" Ball).....	3.80	3.30	3.00
3 to 4' Heavy (15" Ball).....	4.75	4.10	3.70
4 to 5' Heavy (16" Ball).....	6.30	5.50	5.00
<b>soulangeana. — 20'</b>	<b>Saucer Magnolia</b>		
3 to 4' (14" Ball).....	5.00	4.40	4.00
4 to 5' (15" Ball).....	6.90	6.00	5.50
<b>virginiana (glauc) — 20'</b>	<b>Sweet Bay</b>		
1½ to 2' (12" Ball).....	3.25	2.75	2.50
2 to 3' (13" Ball).....	3.80	3.30	3.00
3 to 4' (14" Ball).....	5.10	4.50	.....

	1-4 Each	5-24 Each	25 Up Each
<b>MALUS, Almey. New. Large fiery crimson blossoms.</b>			
4 to 5' .....	\$2.65	\$2.15	\$1.90
5 to 6' .....	3.15	2.65	2.40
<b>baccata columnaris. — 30' Column Siberian Crab</b>			
Narrowest fastigate type. White flowers.			
4 to 5' .....	2.00	1.50	1.25
5 to 6' .....	2.50	2.00	1.75
6 to 7' .....	3.25	2.75	2.50
<b>coronaria. — 30' Wild Sweet Crab</b>			
4 to 5' .....	1.75	1.25	1.00
5 to 6' .....	2.15	1.65	1.40
6 to 8' .....	3.00	2.50	2.25
<b>floribunda. — 12' Japanese Flowering Crab</b>			
4 to 5' .....	1.75	1.50	1.25
5 to 6' .....	2.50	2.00	1.75
6 to 7' .....	3.10	2.60	.....
<b>hopa. — 12' Redflowering Crab</b>			
4 to 5' .....	1.60	1.10	.90
5 to 6' .....	2.00	1.50	1.25
6 to 7' .....	2.75	2.25	2.00
1 to 1¼", 6 to 8' Specimens .....	7.50	6.75	.....
1¼ to 1½", 7 to 9' Specimens .....	9.50	8.55	.....
<b>ioensis Klemi. Klem's Bechtel Crab</b>			
A faster-growing Bechtel's Crab.			
3 to 4' .....	1.85	1.35	1.10
4 to 5' .....	2.25	1.75	1.50
5 to 6' .....	3.00	2.50	.....
<b>ioensis plena. — 10' Bechtel Double Flowering Crab</b>			
2 to 3' .....	1.75	1.25	1.00
3 to 4' .....	2.00	1.50	1.25
4 to 5' Strong (15" Ball Extra) .....	3.50	3.00	.....
<b>purpurea eleyi. — 12' Eley Purple Crab</b>			
Best red variety.			
3 to 4' .....	1.50	1.00	.80
4 to 5' .....	1.60	1.10	.90
5 to 6' .....	2.00	1.50	1.25
<b>sargentii. — 8' Sargent Crab</b>			
2 to 3' .....	2.00	1.50	1.25
3 to 4' .....	2.40	1.90	1.65
<b>Sundog. New, columnar form. Flowers are dark pink.</b>			
2 to 3' .....	1.75	1.25	.....
3 to 4' .....	2.10	1.60	1.35
4 to 5' .....	2.65	2.15	.....
<b>OXYDENDRUM arboreum. — 30' Sourwood, Sorrel Tree</b>			
1½ to 2' (12" Ball Extra) .....	1.75	1.25	1.00
2 to 3' (13" Ball Extra) .....	2.00	1.50	1.25
3 to 4' (15" Ball Extra) .....	3.00	2.50	.....
6 to 8' (21" Ball) .....	14.00	.....	.....
8 to 10' (24" Ball) .....	19.00	.....	.....
10 to 12' (26" Ball) .....	25.00	22.00	.....



London Planes. Picture taken July 1953. Cole's stock is grown only from cuttings taken from selected, disease-free trees.

	1-4 Each	5-24 Each	25 Up Each
<b>PLATANUS acerifolia. — 70'</b>			
		<b>London Planetree</b>	
6 to 8' .....	\$3.25	\$2.75	\$2.50
1 to 1¼" .....	3.80	3.30	3.00
1¼ to 1½" .....	5.00	4.40	4.00
1½ to 1¾" .....	7.50	6.60	6.00
1¾ to 2" .....	9.50	8.50	7.75
2 to 2½" .....	12.30	11.00	10.00
2½ to 3" .....	15.50	13.75	12.50
3 to 3½" .....	19.75	17.75	16.00
 <b>POPULUS alba bolleana. — 50'</b>			
		<b>Bolleana Poplar</b>	
4 to 6' .....	1.15	.90	.75
6 to 8' .....	1.50	1.15	1.00
8 to 10' .....	2.25	1.75	1.50
1¼ to 1½" .....	2.75	2.25	2.00
1½ to 1¾" .....	3.80	3.30	3.00
1¾ to 2" .....	5.30	4.70	4.25
2 to 2½" .....	8.00	7.00	.....

	1-4 Each	5-24 Each	25 Up Each
<b>POPULUS — Continued</b>			
<b>nigra italica. — 60'</b>			
			<b>Lombardy Poplar</b>
4 to 6' (\$250. per M) .....		\$ .40	\$ .30
6 to 8' .....	\$1.35	.90	.65
8 to 10' (\$650. per M) .....	1.50	1.00	.75
1¼ to 1½" (\$900. per M) .....	1.75	1.25	1.00
1½ to 1¾" .....	2.25	1.75	1.50
1¾ to 2" .....	2.75	2.25	2.00
2 to 2½" .....	3.80	3.30	3.00
<b>simoni fastigiata. — 40'</b>			
			<b>Pyramidal Simon Poplar</b>
6 to 8' .....	1.75	1.25	1.00
8 to 10' .....	2.25	1.75	1.50
1¼ to 1½" .....	2.75	2.25	2.00
1½ to 1¾" .....	3.80	3.30	3.00
1¾ to 2" .....	5.30	4.70	4.25
2 to 2½" .....	8.00	7.00	.....
<b>PRUNUS (See Shrubs for other Prunus)</b>			
<b>serrulata Kwanzan (Sekiyama). — 25'</b>			
			<b>Flowering Cherry</b>
4 to 5' (Spring Only) .....	3.30	2.85	2.60
5 to 6' Heavy (18" Ball Extra) .....	6.30	5.50	5.00
6 to 8' Heavy (21" Ball Extra) .....	11.25	10.00	.....
8 to 10' Heavy (24" Ball Extra) .....	15.50	14.00	.....
<b>subhirtella pendula. — 10' Double Weeping Japanese Cherry</b>			
No. 1 Head, 5 to 6' stem (Spring) .....	5.75	5.25	.....
<b>Fountain type. Grafted at ground—12 to 15'</b>			
4 to 5' (Spring only) .....	4.00	3.50	3.25
<b>Thunder Cloud — 20' The finest of all Purple Leaf Plums</b>			
4 to 5' .....	2.00	1.50	1.25
5 to 6' .....	2.25	1.75	1.50
6 to 7' .....	2.75	2.25	2.00
<b>QUERCUS alba. — 75'</b>			
			<b>White Oak</b>
2½ to 3" .....	25.50	22.50	.....
3 to 3½" .....	31.50	28.00	.....
<b>borealis (rubra). — 75'</b>			
			<b>Northern Red Oak</b>
1¼ to 1½" .....	6.90	6.00	5.50
1½ to 1¾" .....	9.25	8.25	7.50
1¾ to 2 " .....	12.30	11.00	10.00
2 to 2½" .....	18.25	16.50	15.00
2½ to 3 " .....	24.50	22.00	20.00
3 to 3½" .....	30.50	27.50	25.00
3½ to 4 " .....	40.00	35.00	.....
<b>coccinea. — 75'</b>			
			<b>Scarlet Oak</b>
1¼ to 1½" .....	6.90	6.00	5.50
2 to 2½" .....	18.25	17.00	.....
2½ to 3 " .....	25.00	22.50	.....
3 to 3½" .....	32.00	.....	.....
3½ to 4 " .....	40.00	.....	.....
4 to 4½" .....	55.00	.....	.....

250 plants sold at 1000 (M) rate.

	1-4 Each	5-24 Each	25 Up Each
<b>QUERCUS — Continued</b>			
<b>palustris. — 75'</b>			<b>Pin Oak</b>
1 to 1¼"	\$5.00	\$4.40	\$4.00
1¼ to 1½"	6.25	5.50	5.00
1½ to 1¾" (See Collected Trees, Page 36)			
2 to 2½"	18.25	16.50	
2½ to 3 "	24.50	22.00	
3 to 3½"	30.50	27.50	
<b>ROBINIA umbraculifera.</b>			
			<b>Globe Locust</b>
Highly recommended for formal or street planting.			
Compact, globe-shaped tops.			
2 yr. No. 1 heads, 6' stem	5.75	5.00	4.50
<b>pseudoacacia — 60'</b>			
			<b>Black Locust</b>
2 year transplanted (\$140 per M)		.30	.18
<b>SALIX blanda. — 55'</b>			
			<b>Wisconsin Weeping Willow</b>
Semi-weeping. Green stems.			
6 to 8'	2.10	1.50	1.25
8 to 10'	2.40	1.90	1.65
<b>matsudana tortuosa. — 20'</b>			
			<b>Contorted Hankow Willow</b>
6 to 8'	2.25	1.75	1.50
8 to 10'	2.75	2.25	2.00
<b>Niobe Golden. — 35'</b>			
			<b>Golden Weeping Willow</b>
5 to 6'	1.75	1.25	1.00
6 to 8'	2.15	1.65	1.40
(For Other Willows — See Shrub Section)			
<b>SORBUS aucuparia. — 30'</b>			
			<b>European Mountain Ash</b>
Beautiful, select trees.			
8 to 10'	3.55	3.05	2.75
1¼ to 1½"	4.35	3.85	3.50
1½ to 2"	5.90	5.25	4.75
2 to 2½"	10.60	9.45	8.50
2½ to 3"	13.50	12.00	11.00
3 to 4"	18.25	16.50	
<b>TAXODIUM distichum. — 50'</b>			
			<b>Baldcypress</b>
10 to 12' (28" Ball) 2½ to 3"	26.25	23.50	
3 to 3½" (33" Ball)	33.75	30.00	

250 plants sold at 1000 (M) rate.

**SPECIALIZATION**

**To Better Service Our Large Wholesale Trade—**

The Cole Nursery Company has discontinued its mail order trade.

To further concentrate our efforts upon giving the best service to you, we have also—

Dropped the general perennial line in favor of sales-tested novelties which we are producing in the largest quantities.

Drop in at the nursery and see why we can offer you top quality plants at competitive prices, with service second to none.

# Deciduous Shrubs

The size immediately following the description indicates approximate height at maturity.

	1-9 Each	10-29 Each	30 Up Each
<b>ACANTHOPANAX sieboldianus (pentaphyllum)—8'</b>		<b>Fiveleaf Aralia</b>	
2 to 3' .....	\$ .75	\$ .60	\$ .50
3 to 4' .....	.80	.65	.55
4 to 5' .....	1.05	.85	.75
<b>ARONIA arbutifolia — 7'</b>		<b>Red Chokeberry</b>	
1½ to 2' .....	.70	.55	.45
2 to 3' .....	.80	.65	.55
<b>a. brilliantissima — 7'</b>		<b>Brilliant Chokeberry</b>	
1½ to 2' .....	.70	.55	.45
2 to 2½' .....	.80	.65	.55
<b>melanocarpa — 6'</b>		<b>Black Chokeberry</b>	
1½ to 2' .....	.70	.55	.45
2 to 3' .....	.80	.65	.55
<b>prunifolia (atropurpurea) — 10'</b>		<b>Purplefruit Chokeberry</b>	
1½ to 2' .....	.70	.55	.45
2 to 3' .....	.80	.65	.55
<b>AZALEA mollis — 5'</b>		<b>Chinese Azalea</b>	
12 to 15" (10" Ball) .....	2.60	2.25	2.00
15 to 18" (11" Ball) .....	3.35	3.00	2.75
<b>mollis x sinensis hybrids — Following Varieties</b>			
<b>Emil Liebig.</b> Orange, 2.			
<b>Franz Vanderbom.</b> Salmon-orange, 2, 3.			
<b>Hortulanus Witte.</b> Yellow, 1, 2.			
<b>Hugo Hardyzer.</b> Red-orange, 1, 2, 3.			
<b>Hugo Koster.</b> Salmon-red, 2, 3.			
<b>J. C. Van Tol.</b> Orange-red, 1, 2, 3.			
<b>Koster's Brilliant.</b> Orange-red, 1, 2, 3.			
<b>Nicholas Beets.</b> Yellow, tinted bronze, 1, 2, 3.			
1. 15 to 18" (11" Ball) .....	3.90	3.50	.....
2. 1½ to 2' (12" Ball) .....	5.00	4.50	.....
3. 2 to 2½' (13" Ball) .....	6.00	5.50	.....
<b>gandavense.</b>		<b>Ghent Hybrid Azalea</b>	
<b>Bjou de Ghentbrugge.</b> Double Rose, 2.			
<b>Coccinea speciosa.</b> Bright orange, 1.			
<b>Fanny.</b> Lilac-pink, 2, 3.			
<b>Pallas.</b> Early red, 2, 3.			
1. 15 to 18" (11" Ball) .....	3.90	3.50	.....
2. 1½ to 2' (12" Ball) .....	5.00	4.50	.....
3. 2 to 2½' (13" Ball) .....	6.00	5.50	.....
<b>Mixed Ghent Hybrids, pink to red.</b>			
<b>Yellow Ghent Hybrids.</b>			
12 to 15" (10" Ball) .....	2.60	2.25	2.00
15 to 18" (11" Ball) .....	3.35	3.00	2.75
1½ to 2' (12" Ball) .....	4.25	3.85	3.50
2 to 2½' (13" Ball) .....	5.75	5.00	4.50



**AZALEA—Continued**

**schlippenbachi — 4'**

12 to 18" (10" Ball).....	\$3.50
1½ to 2' (12" Ball).....	4.90
2 to 2½' (13" Ball).....	6.85

**viscosum — 6'**

15 to 18" bushy (11" Ball).....	2.60
1½ to 2' bushy (12" Ball).....	3.35

**yedoense — 4'**

2 to 2½' heavy (13" Ball).....	7.15
2½ to 3' heavy (14" Ball).....	8.50

**Royal Azalea**

10-29 Each	\$3.00	.....
30 up Each	.....	.....

**Swamp Azalea**

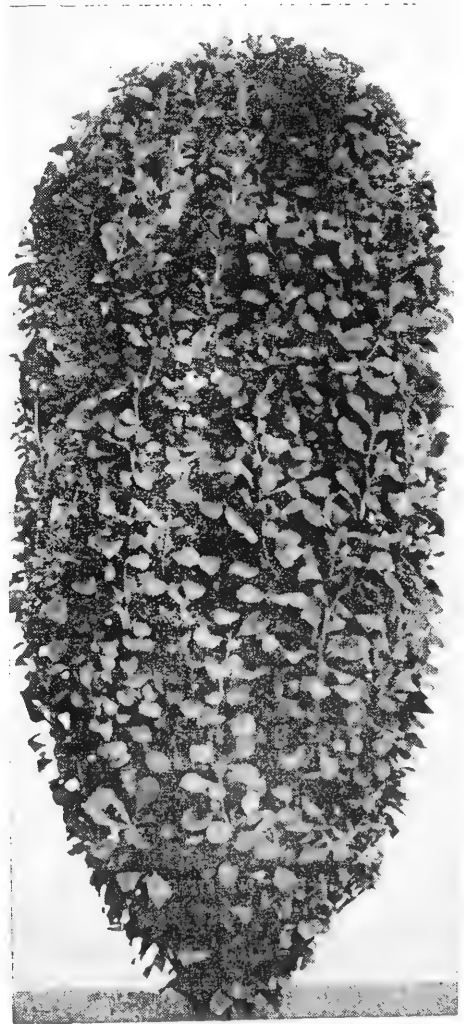
10-29 Each	2.25	\$2.00
30 up Each	3.00	2.75

**Yodogawa Azalea**

10-29 Each	6.50	.....
30 up Each	7.75	.....



2 year Normal Growth



3-year trimmed once  
for picture

Cole's Truehedge Columnberry  
Pictures from Nursery Row Plants

	1-9 Each	10-29 Each	30-249 Each	250 Up Each
<b>BERBERIS koreana — 6'</b>			<b>Korean Barberry</b>	
1½ to 2' .....	\$ .65	\$ .50	\$ .40	....
2 to 2½' .....	.75	.60	.50	....
2½ to 3' .....	.85	.70	.60	....
<b>thunbergi — 4'</b>			<b>Japanese Barberry</b>	
15 to 18" .....	.45	.27	.23	\$ .20
1½ to 2' .....	.55	.35	.30	.27
2 to 2½' .....	.65	.45	.38	.34
<b>thunbergi atropurpurea — 4'</b>			<b>Red-leaved Japanese Barberry</b>	
12 to 15" .....	.55	.37	.32½	....
15 to 18" .....	.60	.42	.37	....
1½ to 2' .....	.65	.47	.42	....

**COLE'S TRUEHEDGE COLUMNBERRY**

**Berberis thunbergi erecta**

Extremely compact, columnar form — valuable for narrow hedges, formal specimens, window boxes, etc. Requires a minimum of care. Glossy dense foliage turns red uniformly in autumn. Can be held to 1 foot or will grow to 3 feet tall.

	1-9 Each	10-29 Each	30-249 Each	250 Up Each
12 to 15" .....	\$ .40	\$ .30	\$ .27	\$ .25
15 to 18" .....	.45	.37	.32	.30
1½ to 2' .....	.55	.42	.37	.35
2 to 2½' .....	.65	.48	.42	.40

	1-9 Each	10-29 Each	30 up Each	
<b>BUDDLEIA — 5'</b>			<b>Butterfly Bush</b>	
Following varieties:				
2 yr. Field Grown .....	\$ .50	\$ .35	\$ .30	
<b>Burgundy.</b> Burgundy red. New, strong-growing.				
<b>Charming.</b> Pink				
<b>Dubonnet.</b> Deep wine. Large spikes.				
<b>Snowbank.</b> Hardy pure white. Round, compact sprays.				

<b>CALYCANTHUS floridus — 5'</b>			<b>Sweet Shrub</b>	
1½ to 2' .....		.70	.55	.45
2 to 3' .....		.80	.65	.55

<b>CARYOPTERIS "Blue Mist" — 4'</b>			<b>Hardy Blue Spirea</b>	
2 year, 18 to 24" .....		.65	.50	.40

**CERCIS — See Ornamental Trees.**

<b>CHAENOMYLES lagenaria—5' (Cydonia japonica)</b>			<b>Flowering Quince</b>	
12 to 18" .....		.50	.35	.28
1½ to 2' .....		.60	.45	.35
2 to 2½' .....		.70	.55	.45

	1-9 Each	10-29 Each	30 Up Each
<b>CHIONANTHUS virginicus — 15'</b>		<b>White Fringetree</b>	
2 to 3'	\$1.75	\$1.50	\$1.25
3 to 4'	2.40	1.90	1.60
4 to 5'	3.25	2.75	.....
5 to 6'	4.75	.....	.....
10 to 12'	12.20	11.00	10.00
<b>CLETHRA alnifolia — 8'</b>		<b>Summersweet</b>	
12 to 18"	.55	.45	.37
1½ to 2'	.70	.55	.45
2 to 2½'	.85	.70	.60
<b>CORNUS alba argenteo-marginata — 8'</b>		<b>Creamedge Dogwood</b>	
1½ to 2'	.85	.70	.60
2 to 3'	1.15	.95	.85
<b>alba sibirica — 8'</b>		<b>Siberian Dogwood</b>	
2 to 3'	.65	.50	.40
3 to 4'	.75	.60	.50
4 to 5'	1.00	.85	.75
5 to 6'	1.35	1.10	.90
<b>baileyi — 10'</b>		<b>Bailey Dogwood</b>	
2 to 3'	.70	.55	.45
3 to 4'	.85	.70	.60
<b>florida — See Ornamental Trees.</b>			
<b>mas — 20'</b>		<b>Corneliancherry Dogwood</b>	
3 to 4'	1.75	1.40	1.25
4 to 5'	2.25	2.00	1.75
<b>racemosa (paniculata) — 12'</b>		<b>Gray Dogwood</b>	
Quite upright growth. Fine for mass plantings.			
Gray bark, profusion of white flowers and white fruit.			
1½ to 2'	.55	.40	.30
2 to 3'	.65	.50	.40
3 to 4'	.75	.60	.50
<b>stolonifera — 8'</b>		<b>Redosier Dogwood</b>	
1½ to 2'	.55	.40	.30
<b>CORYLUS americana — 12'</b>		<b>American Filbert</b>	
3 to 4'	1.15	.95	.80
4 to 5'	1.50	1.25	1.10
<b>COTINUS coggygia (Rhus cotinus) — 15'</b>		<b>Common Smoketree</b>	
1½ to 2'	.85	.70	.60
2 to 3'	1.10	.90	.80
3 to 4'	1.50	1.25	1.10
4 to 5'	1.75	1.50	.....
<b>COTONEASTER acutifolia — 12'</b>		<b>Peking Cotoneaster</b>	
Slender spreading branches on upright bush. Dark green foliage. Splendid for large hedges.			
2 to 3'	.80	.65	.55
3 to 4'	.90	.75	.65
4 to 5'	1.15	.95	.80
5 to 6'	1.55	1.30	1.15
<b>divaricata — 6'</b>		<b>Spreading Cotoneaster</b>	
1½ to 2' (12" Ball)	2.60	2.25	2.00
2 to 3' (13" Ball)	3.40	3.00	2.75
3 to 4' (15" Ball)	4.35	3.85	3.50
4 to 5' (17" Ball)	5.50	5.00	4.50

<b>CYTISUS praecox — 4'</b>	<b>Warminster Broom</b>		
The best broom for our climate. Creamy-yellow blooms in great profusion every year. Green branches add winter interest.			
	1-9 Each	10-29 Each	30 up Each
9 to 12" .....	\$ .90	\$ .75	\$ .65
12 to 15" .....	1.20	1.00	.85
Add 50c each if B&B			

	1-9 Each	10-29 Each	30 Up Each
<b>DEUTZIA gracilis — 3'</b>		<b>Slender Deutzia</b>	
12 to 15" .....	\$ .65	\$ .50	\$ .40
15 to 18" .....	.75	.60	.50
1½ to 2' .....	.85	.70	.60
<b>lemoinei — 5'</b>		<b>Lemoine Deutzia</b>	
15 to 18" .....	.60	.45	.35
1½ to 2' .....	.70	.55	.45
2 to 2½' .....	.80	.65	.55
<b>rosea — 4'</b>		<b>Rosepanicle Deutzia</b>	
15 to 18" .....	.70	.55	.45
1½ to 2' .....	.80	.65	.55
2 to 2½' .....	1.00	.80	.70
<b>ELAEAGNUS angustifolia — 20'</b>		<b>Russian Olive</b>	
2 to 3' .....	.70	.55	.45
3 to 4' .....	.85	.70	.60
<b>EUONYMUS alatus compacta — 6'</b>		<b>Dwarf Winged Euonymus</b>	
1½ to 2' .....	1.35	1.15	.....
2 to 2½' .....	1.70	1.50	1.35
<b>europaeus — 15'</b>		<b>European Burning Bush</b>	
2 to 3' .....	.70	.55	.45
3 to 4' .....	.80	.65	.55
4 to 5' .....	1.10	.90	.80
<b>yedcensis — 10'</b>		<b>Yeddo Euonymus</b>	
2 to 3' .....	.70	.55	.45
3 to 4' .....	.80	.65	.55

For EVERGREEN EUONYMUS see "Evergreen Shrubs"

<b>FORSYTHIA intermedia spectabilis—8'</b>		<b>Showy Border Forsythia</b>	
2 to 3' .....	.65	.50	.40
3 to 4' .....	.75	.60	.50
4 to 5' .....	1.00	.80	.70
<b>suspensa — 8'</b>		<b>Weeping Forsythia</b>	
1½ to 2' .....	.65	.50	.40
2 to 3' .....	.75	.60	.50
<b>HAMAMELIS japonica — 12'</b>		<b>Japanese Witchhazel</b>	
2 to 3' .....	1.65	1.40	.....
3 to 4' .....	2.15	1.90	.....
4 to 5' .....	2.60	2.25	.....
<b>virginiana — 15'</b>		<b>Common Witchhazel</b>	
2 to 3' .....	.90	.75	.65
3 to 4' .....	1.10	.90	.80
4 to 5' .....	1.50	1.25	.....

	1-9 Each	10-29 Each	30 Up Each
<b>HIBISCUS syriacus.</b>			
<b>Shrubalthea, Rose of Sharon</b>			
<b>Coelestis — 10'</b>			<b>Single Blue</b>
2 to 3' .....	\$ .70	\$ .55	\$ .45
<b>Lucy — 15'</b>			<b>Double Red</b>
6 to 7' heavy .....	1.85	1.50	1.25
<b>Snowdrift — 12'</b>			<b>Single White</b>
3 to 4' .....	.80	.65	.55
4 to 5' .....	1.10	.90	.80
<b>Mixed varieties. Identity lost—not seedlings.</b>			
2 to 3' .....	.65	.50	.40
3 to 4' .....	.75	.60	.50
<b>HYDRANGEA arborescens grandiflora—5'</b>			<b>Snowhill Hydrangea</b>
1½ to 2' .....	.55	.40	.35
2 to 3' .....	.70	.55	.45
<b>paniculata grandiflora — 8'</b>			<b>Peegee Hydrangea</b>
12 to 18" .....	.50	.35	.30
1½ to 2' .....	.55	.40	.35
2 to 2½' .....	.70	.55	.45
<b>macrophylla Nikko Blue — 3'</b>			<b>Blue Hydrangea</b>
2 year, 3 canes up, strong .....	1.05	.85	.75
<b>HYPERICUM kalmianum — 4'</b>			<b>Kalm Blueleaf St. Johnswort</b>
Dense rounded shrub with glaucous foliage and immense quantities of brightest golden-yellow flowers. By far the finest shrubby Hypericum.			
15 to 18" .....	.55	.40	.35
1½ to 2' .....	.65	.50	.40
<b>ILEX verticillata — 8'</b>			<b>Common Winterberry</b>
1½ to 2' .....	.85	.70	.60
2 to 3' .....	1.05	.85	.75
<b>KOLKWITZIA amabilis — 8'</b>			<b>Beauty Bush</b>
2 to 3' .....	.80	.65	.55
3 to 4' .....	1.00	.80	.70

**LAGERSTROEMIA indica—3'****"Cole's Hardy Pink Crapemyrtle"**

Root-hardy form which begins flowering in early August. Other types do not bloom until autumn here. Best-selling mail order novelty.

3" pot plants (Spring only) . . . \$ .80    \$ .65    \$ .55

	10-29 Each	30-249 Each	250 Up Each
<b>LIGUSTRUM amurense — 12'</b>			<b>Amur Privet</b>
2 to 3' (heavy transplanted) .....	\$ .28	\$ .22½	\$ .20
3 to 4' (heavy transplanted) .....	.40	.33	.30

	10-29 Each	30-249 Each	250 Up Each
<b>LIGUSTRUM—Continued</b>			
<b>obtusifolium (ibota) — 8'</b>		<b>Border Privet</b>	
1½ to 2' .....	\$ .37	\$ .29	\$ .25
2 to 3' .....	.45	.34	.30
3 to 4' .....	.55	.45	.40
<b>obtusifolium erecta — 8'</b>		<b>Erect Border Privet</b>	
New. A compact superior upright type with excellent foliage.			
1½ to 2' .....	.47	.40	.35
2 to 3' .....	.55	.47	.42
3 to 4' .....	.65	.55	.....
<b>o. regelianum — 6'</b>		<b>Regel Border Privet</b>	
1½ to 2' spread .....	.48	.38	.34
2 to 2½' spread .....	.60	.50	.45
3 to 4' heavy .....	1.00	.80	.....
<b>ovalifolium — 10'</b>		<b>California Privet</b>	
2 to 3' heavy transplanted .....	.22	.17	.15
3 to 4' heavy transplanted .....	.32	.25	.22

	1-9 Each	10-29 Each	30 Up Each
<b>LIGUSTRUM vicaryi — 6'</b>			
10 to 12" .....	\$ .45	\$ .30	\$ .25
12 to 15" .....	.50	.35	.30
<b>LINDERA benzoin — 12'</b>			
		<b>Common Spicebush</b>	
2 to 3' .....	.75	.60	.50
3 to 4' .....	.85	.70	.60
4 to 5' .....	1.15	.95	.80
<b>LONICERA amoena arnoldiana — 8'</b>			
		<b>Arnold Honeysuckle</b>	
Most graceful arching habit and delicate leaves of all honeysuckles. Profuse pale pink flowers. New to the trade.			
2 to 3' .....	.75	.60	.50
3 to 4' .....	.90	.75	.65
4 to 5' .....	1.20	1.00	.90
<b>fragrantissima — 7'</b>		<b>Winter Honeysuckle</b>	
1½ to 2' .....	.60	.45	.35
2 to 3' .....	.70	.55	.45
<b>korolkowi floribunda — 10'</b>		<b>Broad Blueleaf Honeysuckle</b>	
2 to 3' .....	.85	.70	.60
<b>k. zabeli — 8'</b>		<b>Improved Red-flowered Honeysuckle</b>	
2 to 3' .....	.70	.55	.45
3 to 4' .....	.85	.70	.60
<b>morrowi — 10'</b>		<b>Morrow Honeysuckle</b>	
3 to 4' .....	.85	.70	.60
<b>tatarica alba — 10'</b>		<b>White Tatarian Honeysuckle</b>	
2 to 3' .....	.65	.50	.40
3 to 4' .....	.80	.65	.55
4 to 5' .....	1.15	.95	.80
<b>t. grandiflora — 10'</b>		<b>Pink Tatarian Honeysuckle</b>	
2 to 3' .....	.65	.50	.40
3 to 4' .....	.80	.65	.55
4 to 5' .....	1.15	.95	.80

	1-9 Each	10-29 Each	30 Up Each
<b>MYRICA pennsylvanica — 5'</b>	<b>Northern Bayberry</b>		
12 to 15" (10" Ball Extra) .....	\$1.40	\$1.15	\$1.00
15 to 18" (11" Ball Extra) .....	1.75	1.50	1.35
1½ to 2' (12" Ball Extra) .....	2.25	1.90	1.75
<b>PHILADELPHUS Cole's Glorious — 8'</b>	<b>Glorious Mockorange</b>		
Mammoth, single blooms. Strong, upright growth.			
2 to 3' .....	.75	.60	.50
3 to 4' .....	.90	.75	.65
<b>coronarius — 10'</b>	<b>Sweet Mockorange</b>		
1½ to 2' .....	.55	.40	.32
2 to 3' .....	.65	.50	.40
3 to 4' .....	.75	.60	.50
4 to 5' .....	1.00	.80	.70
<b>c. aureus — 4'</b>	<b>Golden Mockorange</b>		
12 to 15" .....	.85	.70	.60
15 to 18" .....	1.15	.95	.80
1½ to 2' .....	1.40	1.15	1.00
<b>lemoinei Avalanche — 5'</b>			
2 to 3' .....	.80	.65	.55
3 to 4' .....	1.00	.80	.70
4 to 5' .....	1.25	1.05	.90
<b>virginalis — 8'</b>	<b>Virginal Mockorange</b>		
1½ to 2' .....	.55	.40	.35
2 to 3' .....	.70	.55	.45
3 to 4' .....	.85	.70	.60
<b>PHYSOCARPUS opulifolius — 10'</b>	<b>Ninebark</b>		
1½ to 2' .....	.60	.45	.35
2 to 3' .....	.70	.55	.45
3 to 4' .....	.85	.70	.60
<b>o. nana — 5'</b>	<b>Dwarf Ninebark</b>		
2 to 3' .....	.75	.60	.50
3 to 4' .....	.85	.70	.60
<b>PRUNUS (See Shade Trees for other Prunus)</b>			
<b>glandulosa rosea — 5'</b>	<b>Double Pink Almond</b>		
2 to 3' Own Root .....	.75	.60	.50
3 to 4' Own Root .....	1.00	.80	.70
<b>RHAMNUS frangula — 12'</b>	<b>Glossy Buckthorn</b>		
3 to 4' .....	.90	.75	.65
4 to 5' .....	1.25	1.05	.90
<b>RHUS aromatica (canadensis) — 5'</b>	<b>Fragrant Sumac</b>		
1½ to 2' .....	.75	.60	.50
2 to 3' .....	.85	.70	.60
<b>cotinus (Smoketree) — See Cotinus coggygia</b>			
<b>ROBINIA hispida — 8'</b>	<b>Rose Acacia</b>		
2 to 3' .....	.75	.60	.50
<b>ROSA hugonis — 6'</b>	<b>Golden Rose of China</b>		
2 to 3' .....	1.05	.85	.75
<b>rugosa — 5'</b>	<b>Rugosa Rose</b>		
1½ to 2' (\$400 per M) .....	.70	.55	.45
2 to 3' (\$550 per M) .....	.85	.70	.60

250 plants sold at 1000 (M) rate.

	1-9 Each	10-29 Each	30 Up Each
<b>ROSA—Continued</b>			
<b>r. hybrid Max Graf. Trailing Rugosa</b>			
Apple-blossom pink. Excellent ground cover.			
2 years .....	\$ .90	\$ .75	\$ .65
<b>wichuraiana. Trailing</b>			
2 year medium .....	.75	.60	.50
<b>SALIX elaeagnos (incana) — 14'</b>			
2 to 3' .....	.65	.50	.40
3 to 4' .....	.75	.60	.50
<b>gracilistyla — 3' Bigcatkin Willow (Rose Gold Pussywillow)</b>			
12 to 18" .....	.55	.40	.32
1½ to 2' .....	.65	.50	.40
2 to 2½' .....	.75	.60	.50
<b>purpurea nana — 4' Dwarf Purpleosier</b>			
Blue-leaved Arctic Willow			
12 to 18" (\$180 per M) .....	.40	.25	.20
1½ to 2' (\$250 per M) .....	.45	.33	.28
2 to 2½' .....	.65	.50	.40
<b>SPIRAEA billiardi.</b>			
Discontinued in favor of the superior Macrothyrsa.			
<b>bumalda Anthony Waterer — 3' Dwarf crimson-flowering</b>			
10 to 12" .....	.50	.35	.27
12 to 18" .....	.60	.45	.35

<b>macrothyrsa.</b>	<b>Improved Billiardi</b>		
A new, brighter pink, more free-flowering type with better foliage.			
12 to 18" (\$250 per M) .....	\$ .50	\$ .37	\$ .30
1½ to 2' (\$300 per M) .....	.60	.45	.35
2 to 3' (\$400 per M) .....	.70	.55	.45

(250 plants sold at the 1000 rate)

<b>nipponica rotundifolia — 7' Big Nippon Spirea</b>			
Vigorous, handsome shrub of upright-spreading habit. Striking, flat, white flower clusters. Healthy, dark green foliage holds on late in fall. Should be better known.			
1½ to 2' .....	.75	.60	.50
2 to 3' .....	.90	.75	.65
<b>vanhouttei — 10' Vanhoutte Spirea</b>			
1½ to 2' .....	.45	.30	.25
2 to 3' .....	.50	.35	.30
<b>SYMPHORICARPOS albus (racemosus) — 6' Snowberry</b>			
1½ to 2' .....	.45	.30	.25
2 to 3' (\$250 per M) .....	.55	.40	.30

250 plants sold at 1000 (M) rate.



	1-9 Each	10-29 Each	30 up Each
<b>SYMPHORICARPOS—Continued</b>			
<b>chenaulti — 5'</b>	<b>Chenault (Pink) Coralberry</b>		
1½ to 2' (\$220 per M).....	.45	.30	.25
2 to 3' (\$250 per M).....	.55	.40	.30
3 to 4' .....	.75	.60	.50
<b>orbiculatus (vulgaris) — 4'</b>	<b>Indiancurrant (Red) Coralberry</b>		
12 to 18" (\$170 per M).....	.40	.25	.20
1½ to 2' (\$220 per M).....	.45	.30	.25
2 to 3' (\$250 per M).....	.55	.40	.30
<b>SYRINGA vulgaris — 15'</b>			
	<b>Common Purple Lilac</b>		
1½ to 2' .....	.65	.50	.40
2 to 3' .....	.75	.60	.50
<b>vulgaris French Hybrids—Following Named varieties — 10'</b>			
Belle de Nancy. Double pink.			
Charles Joly. Double red.			
Ellen Willmott. Double white.			
Ludwig Spaeth. Single reddish-purple.			
President Grevy. Double blue.			
1½ to 2' .....	.85	.70	.60
2 to 3' .....	1.20	1.00	.85
<b>vulgaris. French Hybrids Mixed — 10'</b>			
These are from excellent varieties whose identity has been lost, or kinds mixed.			
Priced same as colors below.			
<b>v. Double pink, white; Single blue, pink, purple, or red.</b>			
Sold to color.			
1½ to 2' .....	.75	.60	.50
2 to 3' .....	.90	.75	.65
3 to 4' .....	1.20	1.00	.90
4 to 5' .....	1.75	1.50	1.35
<b>TAMARIX Summer Glow — 10'</b>			
Blue-foliaged. Wine-red flowers.			
1½ to 2' .....	.70	.55	.45
<b>VACCINIUM (Hybrid) — 4'</b>			
<b>Improved Large Fruiting Blueberry</b>			
Our choice of best varieties.			
15 to 18" (10" Ball).....	2.00	1.70	1.50
1½ to 2' (12" Ball).....	2.60	2.25	2.00
<b>VIBURNUM burkwoodi — 7'</b>			
<b>Burkwood Viburnum</b>			
1½ to 2' (11" Ball).....	2.60	2.25	2.00
2 to 2½' (12" Ball).....	3.35	3.00	2.75
2½ to 3' (13" Ball).....	4.25	3.85	3.50
3 to 3½' (14" Ball).....	5.10	4.65	4.25
3 to 4' specimen (15" Ball).....	6.25	5.50	5.00
4 to 5' specimen (16" Ball).....	7.25	6.60	6.00
<b>cassinoides — 8'</b>			
<b>Witherod Viburnum</b>			
2 to 3' .....	.90	.75	.65
3 to 4' .....	1.25	1.05	.90
<b>chenaulti — 6'</b>			
<b>Chenault Viburnum</b>			
New semi-evergreen hybrid of great beauty.			
2' (12" Ball) .....	4.00	3.60	3.25
<b>dentatum — 12'</b>			
<b>Arrowwood</b>			
2 to 3' .....	.70	.55	.45
3 to 4' .....	.85	.70	.60

250 Plants sold at the 1000 (M) rate

	1-9 Each	10-29 Each	30 up Each
<b>VIBURNUM—Continued</b>			
<b>lantana — 12'</b>		<b>Wayfaring Tree</b>	
2 to 3' .....	\$ .75	\$ .60	\$ .50
3 to 4' .....	.90	.75	.65
<b>prunifolium — 15'</b>		<b>Blackhaw</b>	
2 to 3' .....	1.35	1.15	.....
3 to 4' .....	2.00	1.70	1.50
4 to 5' .....	2.60	2.25	.....
<b>tomentosum — 8'</b>		<b>Doublefile Viburnum</b>	
A Cole specialty is this cutting-grown strain of rounded habit. Always sells out early in the season.			
3 to 4' .....	1.15	.95	.80
4 to 5' .....	1.50	1.25	1.10
5 to 6' .....	2.00	1.70	1.50
<b>triobum — 12'</b>		<b>American Cranberrybush</b>	
2 to 3' .....	1.00	.80	.70
<b>WEIGELA Eva Rathke — 5' Red flowers.</b>			
1½ to 2' .....	.75	.60	.50
2 to 3' .....	.85	.70	.60
3 to 4' .....	1.25	1.00	.....
<b>florida (rosea) — 7'</b>		<b>Oldfashioned Pink Weigela</b>	
2 to 3' .....	.70	.55	.45
3 to 4' .....	.80	.65	.55
<b>vaniceki — 6'</b>		<b>New Red Weigela. Hardier, more shapely.</b>	
2 to 3' .....	.85	.70	.60
3 to 4' .....	1.15	.95	.80

## SPECIALTIES

### Sales Yard - Mail Order

We have many unlisted items and sizes valuable for special sale uses. Please ask for **Special Quotations** mentioning quantities and varieties needed.

## POTTED ROSES

By experience, our customers invariably find Cole's "Vitality Packed" number 1½ Roses produce, when potted, to great satisfaction; in fact fully up to that of ordinary number 1 plants. We suggest that you affect this saving.

# Evergreens

Approximate ball sizes are given for your guidance in estimating shipping weights. See inside back cover for ball sizes and weights.

Prices include balling and burlapping roots.

	1-4 Each	5-24 Each	25 Up Each
<b>ABIES concolor — 50'</b>			<b>White Fir</b>
5 to 6' (21" Ball).....	\$18.00		
6 to 7' (24" Ball).....	22.50		
Specimens to 20' — Prices on request.			
<b>CHAMAECYPARIS (Retinospora)</b>			<b>Falsecypress</b>
<b>p plumosa aurea — 20'</b>		<b>Goldplume</b>	<b>Falsecypress</b>
2 to 2½' (12" Ball).....	3.75	\$3.25	
2½ to 3' (13" Ball).....	4.50	4.00	
3 to 3½' (14" Ball).....	5.50	5.00	
3½ to 4' (15" Ball).....	6.75	6.00	
4 to 5' (16" Ball).....	8.90	8.00	
<b>p. plumosa compacta aurea—6'</b>		<b>Dwarf Goldplume</b>	<b>Falsecypress</b>
1½ to 2' Spread (12" Ball).....	3.90	3.50	
2 to 2½' Spread (13" Ball).....	5.00	4.50	\$4.00
2½ to 3' Spread (14" Ball).....	6.50	5.75	
<b>JUNIPERUS chinensis armstrongi — 6'</b>			<b>Armstrong Juniper</b>
A bright green, naturally dense-growing spreader of great merit.			
15 to 18" Spread (11" Ball).....	3.10	2.75	
1½ to 2' Spread Hvy. (12" Ball) ..	4.30	3.90	
2 to 2½' Spread Hvy. (13" Ball) ...	5.50	5.00	
<b>c. columnaris glauca — 20'</b>		<b>Silver Column</b>	<b>Chinese Juniper</b>
3½ to 4' (15" Ball).....	6.75	6.00	
4 to 4½' (16" Ball).....	8.25	7.40	
5 to 6' Specimen (18" Ball).....	12.00		
6 to 7' Specimen (20" Ball).....	15.00		
7 to 8' Specimen (22" Ball).....	18.00		
<b>c. pfitzeriana — 6'</b>			<b>Pfitzer Juniper</b>
15 to 18" Spread (11" Ball).....	3.10	2.75	2.50
1½ to 2' Spread (12" Ball).....	3.90	3.50	3.15
2 to 2½' Spread (13" Ball).....	5.15	4.65	4.25
<b>c. pfitzeriana plumosa — 3'</b>		<b>Moraine Pfitzer</b>	<b>Juniper</b>
15 to 18" Spread (11" Ball).....	3.35	3.00	2.75
1½ to 2' Spread (12" Ball).....	4.10	3.75	3.40
2 to 2½' Spread (13" Ball).....	5.25	4.75	4.35
<b>c. pfitzeriana Silver Blue—6'</b>		<b>Silver Blue Pfitzer</b>	<b>Juniper</b>
Rapid, compact growth; rich silver blue color.			
1½ to 2' Spread Hvy. (12" Ball) ..	4.25	3.85	3.50
2 to 2½' Spread Hvy. (13" Ball) ..	5.50	5.00	4.50
2½ to 3' Spread Hvy. (14" Ball)...	7.00	6.30	5.75
<b>communis hibernica — 8'</b>			<b>Irish Juniper</b>
2 to 3' heavy (12" Ball).....	2.60	2.25	2.00

	1-4 Each	5-24 Each	25 Up Each
<b>JUNIPERUS — Continued</b>			
<b>excelsa stricta — 6'</b>	<b>Spiny Greek Juniper</b>		
15 to 18" (11" Ball).....	\$3.10	\$2.75	.....
<b>glauca hetzi — 7'</b>	<b>Heiz Blue Juniper</b>		
2 to 2½' Spread (13" Ball).....	5.00	4.50	.....
2 to 2½' Globes (14" Ball).....	5.60	5.00	.....
<b>horizontalis plumosa—2'</b>	<b>Andorra Purple Creeping Juniper</b>		
1½ to 2' Spread (12" Ball).....	4.10	3.75	.....
2 to 2½' Spread (13" Ball).....	5.00	4.50	.....
<b>sabina Von Ehron — 8'</b>	<b>Vase Shaped Savin Juniper</b>		
1½ to 2' Spread Hvy. (12" Ball)....	3.35	3.00	.....
2 to 2½' Spread Hvy. (13" Ball)....	4.15	3.75	.....
<b>scopulorum Pathfinder — 20'</b>	<b>Pathfinder Blue Juniper</b>		
Intense silver-blue. Has shown no tendency to blight here.			
3½ to 4' (16" Ball).....	6.50	5.75	\$5.25
4 to 5' (17" Ball).....	8.00	7.25	6.50
<b>virginiana — 35'</b>	<b>Eastern Redcedar</b>		
6 to 7' (20" Ball).....	11.50	10.00	.....
7 to 8' (22" Ball).....	14.00	12.00	.....
8 to 9' (24" Ball).....	17.50	15.00	.....
<b>v. burki — 18'</b>	<b>Burk Redcedar</b>		
3½ to 4' (16" Ball).....	6.20	5.50	5.00
4 to 4½' (17" Ball).....	7.65	6.90	6.25
<b>v. canaerti — 30'</b>	<b>Canaert Redcedar</b>		
3 to 3½' (15" Ball).....	5.75	5.10	4.60
3½ to 4' (16" Ball).....	6.50	5.75	5.25
<b>v. glauca — 22'</b>	<b>Silver Redcedar</b>		
3 to 3½' (15" Ball).....	5.75	5.10	4.60
3½ to 4' (16" Ball).....	6.50	5.75	5.25
<b>v. keteleeri — 15'</b>	<b>Keteleer Redcedar</b>		
3½ to 4' (16" Ball).....	6.50	5.75	5.25
<b>v. pyramidiformis (Hilli) — 18'</b>	<b>Purple Pyramid Juniper</b>		
3½ to 4' (16" Ball).....	6.50	5.75	5.25
4 to 4½' (17" Ball).....	8.00	7.25	.....
5 to 6' (18" Ball).....	12.00	11.00	.....

Cole's Upright Junipers are "Picture-Trimmed" — uniform and brightly colored.

<b>PICEA abies (excelsa) — 75'</b>	<b>Norway Spruce</b>		
4 to 5' (17" Ball).....	7.75	7.00	.....
5 to 6' (18" Ball).....	10.00	9.00	.....
6 to 8' (20" Ball).....	13.00	11.50	10.50
<b>a. nidiformis — 3'</b>	<b>Nest Norway Spruce</b>		
1½ to 2' Spread (13" Ball).....	7.00	.....	.....
2 to 2½ Spread (14" Ball).....	10.00	.....	.....
<b>glauca conica — 5'</b>	<b>Dwarf Alberta Spruce</b>		
1½ to 2' (12" Ball).....	5.75	5.00	.....
2 to 2½' (13" Ball).....	6.75	6.00	.....

	1-4 Each	5-24 Each	25 Up Each
<b>PINUS cembra — 50'</b>		<b>Swiss Stone Pine</b>	<b>Pine</b>
4 to 5' (17" Ball) .....	\$20.00		
5 to 6' (19" Ball) .....	25.00		
<b>TAXUS baccata repandens — 2½'</b>		<b>Spreading English Yew</b>	
1½ to 2' Spread (12" Ball) .....	5.50	\$5.00	\$4.50
2 to 2½' Spread (13" Ball) .....	7.00	6.35	5.75
<b>cuspidata — 6'</b>		<b>Japanese Yew</b>	
15 to 18" Spread (11" Ball) .....	3.85	3.50	3.15
1½ to 2' Spread (12" Ball) .....	4.90	4.40	4.00
2 to 2½' Spread (13" Ball) .....	6.60	6.00	5.50
2½ to 3' Spread (14" Ball) .....	9.50	8.75	8.00
6 to 7' Specimens (32" Ball) .....	65.00		
<b>c. capitata — 15'</b>		<b>Upright Japanese Yew</b>	
2½ to 3' (14" Ball) .....	8.75	8.00	
3 to 3½' (15" Ball) .....	11.50	10.50	
4 to 4½' (18" Ball) .....	18.50	17.00	
4½ to 5' (19" Ball) .....	22.00	20.00	
5 to 5½' (20" Ball) .....	26.50	24.00	
6 to 7' Specimens (30" Ball) .....	65.00		
9 to 10' Specimens (38" Ball) .....	90.00		



Taxus Hicksi, fat and full in July, 1953, with two growing months to go.

	1-4 Each	5-24 Each	25 Up Each
<b>TAXUS — Continued</b>			
<b>c. nana — 5'</b>	<b>Dwarf Japanese Yew</b>		
12 to 15" Spread (10" Ball)	\$ 4.00	\$ 3.60	\$ 3.25
15 to 18" Spread (11" Ball)	5.25	4.75	4.25
18 to 21" Spread (12" Ball)	6.00	5.50	5.00
21 to 24" Spread (13" Ball)	7.25	6.60	6.00
24 to 27" Spread (14" Ball)	10.00	9.00	.....
<b>c. wilsoni — 12'</b>	<b>Wilson's Yew</b>		
1½ to 2' (12" Ball)	5.50	5.00	4.50
2 to 2½' (14" Ball)	7.00	6.35	5.75
<b>media cliffoni — 8'</b>	<b>Clifton's Yew</b>		
15 to 18" Spread (11" Ball)	4.25	3.85	3.50
1½ to 2' Spread (12" Ball)	5.50	5.00	4.50
<b>m. Cole's Globe — 10'</b>	Interesting, new semi-dwarf spreader. Deep green foliage is bronzy at tips of twigs.		
15 to 18" Spread (11" Ball)	4.25	3.85	3.50
18 to 21" Spread (12" Ball)	5.10	4.65	4.25
<b>m. hatfieldi — 20'</b>	<b>Hatfield Yew</b>		
1½ to 2' (12" Ball)	4.90	4.40	4.00
2 to 2½' (13" Ball)	6.50	6.00	5.50
<b>m. hicksi — 10'</b>	<b>Hicks Yew</b>		
12 to 18" Hedge Grade (9" Ball)	2.25	2.00	1.75
15 to 18" (11" Ball)	3.65	3.30	3.00
1½ to 2' (12" Ball)	4.50	4.10	3.75
2 to 2½' (13" Ball)	5.90	5.40	4.90
2½ to 3' (14" Ball)	7.50	6.90	6.25
3 to 3½' (16" Ball)	9.75	8.80	.....
<b>THUJA occidentalis — 25'</b>	<b>American or Eastern Arborvitae</b>		
3 to 4' (13" Ball)	4.40	4.00	3.65
4 to 5' (14" Ball)	5.50	5.00	4.50
<b>o. elegantissima — 20'</b>	<b>Goldtip Arborvitae</b>		
2 to 3' (12" Ball)	3.65	3.30	3.00
3 to 4' (13" Ball)	5.00	4.50	4.00
4 to 5' (15" Ball)	7.00	6.50	.....
<b>o. nigra — 20'</b>	<b>Dark Green American Arborvitae</b>		
2½ to 3' (12" Ball)	3.60	3.25	.....
3 to 4' (14" Ball)	4.65	4.25	3.85
4 to 5' (15" Ball)	5.75	5.25	4.75
5 to 6' (17" Ball)	7.25	6.60	6.00
6 to 7' (18" Ball)	9.00	8.25	.....
<b>o. pyramidalis — 25'</b>	<b>Pyramidal Arborvitae</b>		
3 to 4' (13" Ball)	4.50	4.00	.....
4 to 5' (14" Ball)	5.75	5.25	.....
5 to 6' (16" Ball)	7.35	6.65	.....
6 to 7' (17" Ball)	9.50	8.50	.....
<b>o. wareana — 15'</b>	<b>Ware or Siberian Arborvitae</b>		
2 to 2½' (12" Ball)	3.35	3.00	2.75
2½ to 3' (13" Ball)	4.50	4.10	3.75
3 to 3½' (14" Ball)	5.75	5.25	4.75

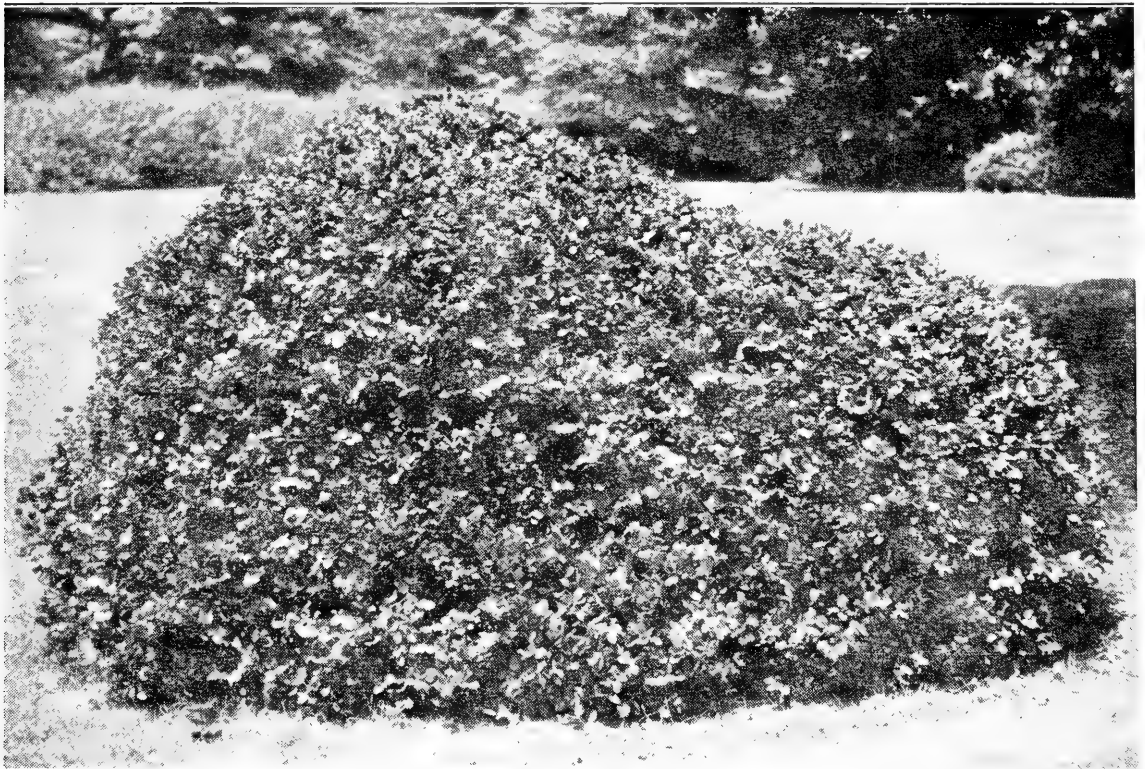
	1-4 Each	5-24 Each	25 up Each
<b>THUJA — Continued</b>			
<b>o. woodwardi — 4'</b>			
	<b>Woodward Globe Arborvitae</b>		
15 to 18" (11" Ball)	\$2.15	\$1.90	\$1.65
1½ to 2' (12" Ball)	2.50	2.25	2.00
2 to 2½' (13" Ball)	3.60	3.25	2.90
<b>TSUGA canadensis — 75'</b>			
	<b>Hemlock Spruce</b>		
1½ to 2' (11" Ball)	2.75	2.50	2.25
2 to 2½' (12" Ball)	3.40	3.10	2.75
2½ to 3' (13" Ball)	4.50	4.15	3.75
2½ to 3' Heavy (14" Ball)	5.50	5.00	4.50
3 to 4' (14" Ball)	7.25	6.60	6.00
3 to 3½' Heavy (14" Ball)	7.75	7.00	6.25
3½ to 4' Heavy (15" Ball)	9.50	8.60	7.80
4 to 5' Heavy (17" Ball)	12.00	11.00	10.00
5 to 6' (17" Ball)	14.00	12.75	11.50
5 to 6' Heavy (19" Ball)	16.50	15.00	.....
6 to 7' Heavy (20" Ball)	20.00	17.50	.....
<b>caroliniana — 50'</b>			
	<b>Carolina Hemlock</b>		
10 to 12' Trimmed Spec. (32" Ball)	75.00	.....	.....
12 to 14' Trimmed Spec. (34" Ball)	90.00	.....	.....
<b>sieboldi — 35'</b>			
	<b>Siebold Hemlock</b>		
4 to 5' (18" Ball)	25.00	.....	.....
5 to 6' (21" Ball)	32.00	.....	.....
6 to 7' (23" Ball)	40.00	.....	.....

Cole's evergreens are properly sheared to produce dense, symmetrical, colorful specimens.

## Evergreen Shrubs

	1-4 Each	5-24 Each	25 up Each
<b>ABELIA grandiflora — 3'</b>			
	<b>Glossy Abelia</b>		
2 year 2 ft. (11" Ball)	\$ 2.40	\$ 2.00	\$ 1.75
<b>DAPHNE cneorum — 1'</b>			
	<b>Rose Daphne</b>		
9 to 12" Spread (7" Ball)	1.50	1.25	1.10
<b>EUONYMUS fortunei carrierei — 3'</b>			
	<b>Glossy Wintercreeper</b>		
15 to 18"	.90	.75	.65
1½ to 2'	1.05	.90	.80
2 to 2½'	1.35	1.15	1.00
2½ to 3'	1.75	1.50	1.35
<b>f. coloratus — 2'</b>			
	<b>Purpleleaf Wintercreeper</b>		
15 to 18"	.75	.60	.50
1½ to 2'	.95	.80	.70
<b>f. erecta — 3'</b>			
	<b>Upright Wintercreeper</b>		
15 to 18"	1.10	.95	.80
1½ to 2'	1.35	1.15	1.00
2 to 2½'	1.75	1.50	1.35
<b>f. radicans — 18"</b>			
	<b>Common Wintercreeper</b>		
9 to 12"	.65	.50	.40
12 to 15"	.75	.60	.50
15 to 18"	.85	.70	.60
1½ to 2'	1.15	.95	.....

<b>EUONYMUS—Continued</b>	<b>Each 1-4</b>	<b>Each 5-24</b>	<b>Each 25 up</b>
<b>f. vegetus — 4'</b>			
12 to 15" .....	\$1.25	\$1.05	\$ .90
15 to 18" .....	1.50	1.30	1.15
1½ to 2' .....	1.90	1.65	1.50
<b>kiautschovicus (patens) — 5'</b>			
15 to 18" .....	1.75	1.50	.....
1½ to 2' .....	2.15	1.90	.....
<b>HEDERA helix baltica</b>			
Propagated from established small leaved plants that have thrived through 25 of our severe winters.			
2" Pots — year old — 12" tops.....		.20	.12
		(\$95.00 per M)	
<b>ILEX crenata convexa (bullata) — 5'</b>			
12 to 15" (10" Ball).....	2.85	2.50	2.25
15 to 18" (11" Ball).....	3.35	3.00	2.75
18 to 21" (12" Ball).....	4.50	4.10	3.75
21 to 24" (13" Ball).....	5.75	5.25	.....
<b>c. convexa (grown from seed) — 5'</b>			
This lot is composed of extremely interesting types that have wintered better than convexa. Growth habits very similar.			
12 to 15" (10" Ball).....	2.60	2.25	2.00
15 to 18" (11" Ball).....	3.10	2.75	2.50
1½ to 2' (12" Ball).....	4.25	3.85	3.50
2 to 2½' (13" Ball).....	5.50	5.00	4.60



Euonymus vegetus lends itself to close trimming for hedge or topiary art.



	1-4 Each	5-24 Each	25 up Each
<b>ILEX—Continued</b>			
<b>c. latifolia — 8'</b>	<b>Bigleaf</b>	<b>Japanese</b>	<b>Holly</b>
1½ to 2' (12" Ball).....	\$4.25	\$3.85	\$3.50
2 to 2½' (13" Ball).....	5.50	5.00	4.60
2½ to 3' (15" Ball).....	7.25	6.60	6.00
3 to 3½' (16" Ball).....	9.00	8.25	7.50
3½ to 4' (17" Ball).....	10.50	9.60	8.75
4 to 4½' (18" Ball).....	12.75	11.50	10.50
4½ to 5' (19" Ball).....	14.25	13.00	.....
<b>c. rotundifolia — 7'</b>	<b>Roundleaf</b>	<b>Japanese</b>	<b>Holly</b>
15 to 18" (11" Ball).....	2.85	2.50	2.25
18 to 21" (12" Ball).....	3.75	3.35	3.00
21 to 24" (13" Ball).....	4.85	4.40	4.00
<b>glabra — 6'</b>			<b>Inkberry</b>
12 to 15" (10" Ball).....	2.10	1.75	1.50
15 to 18" (11" Ball).....	2.60	2.25	2.00
<b>opaca — 25'</b>			<b>American Holly</b>
Sold only on inspection at our nursery. For sexed plants, your choice male or female, add 1/3rd to following prices:			
2 to 3' (14" Ball) (unsexed only) ..	5.50	.....	.....
3 to 3½' (15" Ball).....	6.50	.....	.....
3½ to 4' (16" Ball).....	7.50	.....	.....
4 to 4½' (17" Ball).....	9.00	.....	.....
4½ to 5' (18" Ball).....	10.50	.....	.....
5 to 6' (20" Ball).....	13.00	.....	.....
6 to 7' (21" Ball).....	16.50	.....	.....
<b>MAHONIA aquifolium — 4'</b>		<b>Oregon Hollygrape</b>	
15 to 18" (11" Ball).....	2.85	2.50	2.25
1½ to 2' (12" Ball).....	3.75	3.30	3.00
2 to 2½' (14" Ball).....	4.75	4.25	.....
<b>PACHISTIMA canbyi — 1'</b>		<b>Canby Pachistima</b>	
1 yr. field grown, TT, small ball ..	1.35	1.10	.90
<b>PACHYSANDRA terminalis — 10"</b>		<b>Japanese Spurge</b>	
Evergreen ground cover.			
Field Grown .....	.30	.22	.18
<b>PIERIS japonica — 7'</b>		<b>Japanese Pieris</b>	
15 to 18" (12" Ball).....	3.35	3.00	.....
1½ to 2' (13" Ball).....	4.85	4.40	.....
2 to 2½' (14" Ball).....	6.35	5.75	.....
3 to 3½' (15" Ball).....	9.00	8.25	.....
<b>PYRACANTHA coccinea lalandi — 8'</b>		<b>Laland Firethorn</b>	
3 to 3½' (16" Ball).....	6.75	6.00	.....
<b>RHODODENDRON catawbiense — 6'</b>		<b>Lavender-Pink</b>	
1½ to 2' (12" Ball).....	4.35	3.85	3.50
2 to 3' (13" Ball).....	5.60	5.00	4.50
<b>c. grandiflorum — 6'</b>		<b>Lilac (Cobalt-Violet)</b>	
Full, budded, healthy plants.			
1½ to 2' (11" Ball).....	6.25	5.50	5.00
2 to 2½' (12" Ball).....	7.60	6.90	6.25

	1-4 Each	5-24 Each	25 up Each
<b>RHODODENDRON—Continued</b>			
<b>maximum — 8'</b>		<b>Rosebay Rhododendron</b>	
2 to 3' (13" Ball).....	\$5.00	\$4.40	\$4.00
3 to 4' (15" Ball).....	6.25	5.50	5.00
<b>Hybrids — Following Varieties</b>			
We reserve the right to substitute where necessary			
<b>Catawbiense Boursalt.</b> Violet-pink			
<b>Parson's Gloriosum.</b> Pink (Amaranth Rose)			
<b>Roseum elegans.</b> Lilac-pink			
1½ to 2' .....	6.60	6.00	.....
2 to 2½' .....	8.25	7.50	.....
<b>Hybrids — Red or Purple Varieties</b>			
1½ to 2' .....	8.25	7.50	.....
2 to 2½' .....	9.50	8.75	.....

## Vines

	1-9 Each	10-29 Each	30 up Each
<b>AMPELOPSIS (See Parthenocissus)</b>			
<b>CAMPSIS tagliabuana Mme. Galen</b>		<b>Hybrid Trumpet creeper</b>	
2 year .....	\$ 1.10	\$ .90	\$ .75
<b>CELASTRUS orbiculatus</b>		<b>Oriental Bittersweet</b>	
2 year No. 1 (\$300 per M).....	.50	.40	.35
2 year med. (\$250 per M).....	.45	.33	.28
<b>scandens</b>		<b>American Bittersweet</b>	
2 year No. 1 (\$300 per M).....	.50	.40	.35
2 year med. (\$250 per M).....	.45	.33	.28
<b>LONICERA Gold Flame</b>		<b>Everblooming red and gold Honeysuckle</b>	
2 year XX .....	.65	.50	.40
<b>japonica halliana</b>		<b>Hall's Japanese Honeysuckle</b>	
2 year No. 1 (\$220 per M).....	.45	.30	.25
2 year med. (\$175 per M).....	.40	.25	.20
<b>PARTHENOCISSUS (Ampelopsis)</b>			
<b>tricuspidata (veitchi)</b>		<b>Boston Ivy</b>	
2 year No. 1 .....	.60	.45	.40
<b>POLYGONUM auberti</b>		<b>Silver Lace or China Fleecevine</b>	
2 year .....	.75	.60	.50
<b>reynoutria — 12"</b>			
Excellent herbaceous ground cover. Apple green foliage is striking in fall. Red, fleecy flowers make a big show in September.			
2 year .....	.45	.30	.25
<b>VINCA minor</b>		<b>Periwinkle or Myrtle</b>	
Strong plants (\$95 per M).....	.....	.16	.12
<b>m. Bowles</b>		<b>Bowles Variety Myrtle</b>	
Strong grower. Foliage dark green and deeply textured.			
Strong field grown (\$180 per M) .....	.....	.24	.20

250 plants sold at 1000 (M) rate.

# Cole's Ohio Grown Roses

Acclimated and Ready to Produce

PATENTED HYBRID TEA ROSES

	1-9 Each	10-19 Each	20-99 Each	100-249 Each	250 up Each
<b>Blanche Mallerin.</b> Pat. No. 594. Retail \$2.00. A glorious white The best variety.					
No. 1 .....	\$1.30	\$1.10	\$1.00	\$.95	\$.85
No. 1½ .....		.88	.80	.76	.68
<b>Buccaneer.</b> Pat. No. 1119. Retail \$2.75. A most brilliant, intense, unfading yellow rose. Vigorous and prolific.					
No. 1 .....	1.75	1.50	1.37	1.30	1.20
No. 1½ .....		1.20	1.10	1.04	.96
<b>Capistrano.</b> Pat. No. 922. Retail \$2.25. 1950 All America. Clear rose-pink. Rich fragrance.					
No. 1 .....	1.45	1.25	1.12	1.05	.95
No. 1½ .....		1.00	.90	.84	.76
<b>Charlotte Armstrong.</b> Pat. No. 455. Retail \$2.25. All America. Long, slender blood-red buds opening spectrum red to cerise.					
No. 1 .....	1.45	1.25	1.12	1.05	.95
No. 1½ .....		1.00	.90	.84	.76
<b>Chrysler Imperial.</b> Pat. No. 1167. Retail \$2.75. All America for 1953. An unmatched vivid crimson rose with oxblood red over-tones. Strong grower.					
No. 1 .....	1.75	1.50	1.37	1.30	1.20
No. 1½ .....		1.20	1.10	1.04	.96
<b>Forty Niner.</b> Pat. No. 792. Retail \$2.50. All America. Cardinal-red and chrome-yellow bicolor.					
No. 1 .....	1.65	1.40	1.25	1.20	1.10
No. 1½ .....		1.12	1.00	.96	.88
<b>Fred Howard.</b> Pat. No. 1006. Retail \$2.50. All America 1952. Long, rich yellow buds, tipped light pink. Strong tall grower, heavy blooming.					
No. 1 .....	1.65	1.40	1.25	1.20	1.10
No. 1½ .....		1.12	1.00	.96	.88
<b>Helen Traubel.</b> Pat. No. 1028. Retail \$2.75. All America 1952. Sparkling pink to luminous apricot. Unusually large long buds. Very strong growth.					
No. 1 .....	1.75	1.50	1.37	1.30	1.20
No. 1½ .....		1.20	1.10	1.04	.96
<b>Horace McFarland.</b> Pat. No. 730. Retail \$2.00. All America 1945. Large deep apricot buds, buff-salmon flowers.					
No. 1 .....	1.30	1.10	1.00	.95	.85
No. 1½ .....		.88	.80	.76	.68
<b>Lowell Thomas.</b> Pat. No. 595. Retail \$2.00. All America. Large, clear yellow.					
No. 1 .....	1.30	1.10	1.00	.95	.85
No. 1½ .....		.88	.80	.76	.68

	1-9 Each	10-19 Each	20-99 Each	100-249 Each	250 up Each
<b>PATENTED HYBRID TEA ROSES—Continued</b>					
<b>Mirandy.</b> Pat. No. 732. Retail \$2.25. All America. Dark red, spicily fragrant.					
No. 1 .....	\$1.45	\$1.25	\$1.12	\$1.05	\$.95
No. 1½ .....		1.00	.90	.84	.76
<b>Mission Bells.</b> Pat. No. 923. Retail \$2.25. All America. Salmon buds open to clear, shrimp pink.					
No. 1 .....	1.45	1.25	1.12	1.05	.95
No. 1½ .....		1.00	.90	.84	.76
<b>Nocturne.</b> Pat. No. 713. Retail \$2.00. All America. Bright cardinal-red with dark shadings of crimson.					
No. 1 .....	1.30	1.10	1.00	.95	.85
No. 1½ .....		.88	.80	.76	.68
<b>Peace.</b> Pat. No. 591. Retail \$2.50. All America. Golden to cream-yellow, buff and pink.					
No. 1 .....	1.65	1.40	1.25	1.20	1.10
No. 1½ .....		1.12	1.00	.96	.88
<b>Sutter's Gold.</b> Pat. No. 885. Retail \$2.25. All America. Yellow shaded orange and red.					
No. 1 .....	1.45	1.25	1.12	1.05	.95
No. 1½ .....		1.00	.90	.84	.76
<b>Suzon Lotthe.</b> Pat. No. 934. Retail \$2.50. By originator of "Peace". Lovely, large, pearl pink, peach center. Delightfully fragrant					
No. 1 .....	1.65	1.40	1.25	1.20	1.10
No. 1½ .....		1.12	1.00	.96	.83
<b>Taffeta.</b> Pat. No. 716. Retail \$2.00. All America. Carmine-rose and buff.					
No. 1 .....	1.30	1.10	1.00	.95	.85
No. 1½ .....		.88	.80	.76	.68
<b>Tallyho.</b> Pat. No. 828. Retail \$2.00. All America. Pink petals, reverse rich crimson.					
No. 1 .....	1.30	1.10	1.00	.95	.85
No. 1½ .....		.88	.80	.76	.68

### NON-PATENTED HYBRID TEA ROSES

	1-9 Each	10-49 Each	50-199 Each	200 up Each
Grade No. 1 .....	\$.80	\$.60	\$.55	\$.50
Grade No. 1½ .....		.50	.45	.40
<b>Condesa de Sastago.</b> Coppery-pink; reverse golden yellow.				
<b>Crimson Glory.</b> Deep crimson. The Glory Rose.				
<b>Editor McFarland.</b> Brilliant pink.				
<b>Frau Karl Druschki.</b> White hybrid-perpetual.				
<b>Golden Sastago.</b> Buttercup yellow. Always in bloom.				
<b>Joanna Hill.</b> Yellow with bronze shadings.				
<b>McGredy's Ivory.</b> Large, well formed, creamy white.				
<b>Pink Dawn.</b> Pink touched salmon-rose.				
<b>Poinsettia.</b> Unfading scarlet.				
<b>President Hoover.</b> Yellow with pink and flame tints.				
<b>Sister Therese.</b> Rich yellow. Vigorous bush.				

**FLORIBUNDA ROSES**

	1-9 Each	10-19 Each	20-99 Each	100-249 Each	250 up Each
<b>Crimson Rosette.</b> Pat. No. 901. Retail \$1.75. Profuse with double deep red roses. Strong grower.					
No. 1	\$1.20	\$1.00	\$ .88	\$ .80	\$ .75
No. 1½		.80	.70	.64	.60
<b>Embers.</b> Pat. No. 1178. Retail \$2.25. Tall-growing, vigorous bush. Flowers burning scarlet.					
No. 1	1.45	1.25	1.12		
No. 1½		1.00	.90		
<b>Floradora.</b> All America. Striking cinnabar red.					
No. 1	.80	.65	.60	.55	.50
No. 1½		.55	.50	.45	.40
<b>Frolic.</b> Pat. No. 1179. Retail \$2.25. Masses of clear pink bloom. Bushy, rounded plant.					
No. 1	1.45	1.25	1.12		
No. 1½		1.00	.90		
<b>Irene of Denmark.</b> Pat. No. 889. Retail \$2.00. The best double, pure white Floribunda.					
No. 1	1.30	1.10	1.00	.95	.85
No. 1½		.88	.80	.76	.68
<b>Lafayette Improved.</b> Ever-popular, bright cherry-crimson.					
No. 1	.80	.65	.60	.55	.50
No. 1½		.55	.50	.45	.40
<b>Margo Koster.</b> Dainty coral-orange Polyantha. Prolific.					
No. 1	.80	.65	.60	.55	.50
No. 1½		.55	.50	.45	.40
<b>Mrs. Inge Poulsen.</b> Pat. No. 1050. Retail \$1.50. Pastel blend of amber, apricot and pink tints.					
No. 1	1.10	.90	.75		
No. 1½		.72	.60		
<b>Poulsen's Bedder.</b> FINEST NEW pink Floribunda of all. Great masses of big, lightly ruffled blooms of clear, rich, clean pink. Strong, upright plants.					
No. 1	1.10	.90	.75	.70	.65
No. 1½		.72	.60	.56	.52
<b>Red Ripples.</b> Bright Christmas red. Tall grower.					
No. 1	.80	.65	.60	.55	.50
No. 1½		.55	.50	.45	.40
<b>Rosenelfe.</b> LaFrance Pink. Excellent, strong bushes.					
No. 1	.80	.65	.60	.55	.50
No. 1½		.55	.50	.45	.40
<b>Tapis Rose (Pink Carpet).</b> Pat. No. 960. Retail \$1.50. Deep sweet tyrian-rose, blooms in great quantities.					
No. 1	1.10	.90	.75	.70	.65
No. 1½		.72	.60	.56	.52

## CLIMBING ROSES

	1-9 Each	10-19 Each	20-99 Each	100-249 Each	250 up Each
<b>Blaze.</b> Best hardy red. Repeat-blooming.					
No. 1	\$.80	\$.65	\$.60	\$.55	\$.50
<b>Dream Girl.</b> Pat. No. 643. Retail \$2.25. Coral-pink, spicy fragrance.					
Repeats.					
No. 1	1.45	1.25	1.12	1.05	.95
No. 1½		1.00	.90	.84	.76
<b>Excelsa.</b> Red Dorothy Perkins Rambler.					
2 year	.80	.60	.50	.44	.40
<b>Max Graf.</b> Rich pink flowers. Trailing rugosa type.					
2 year	.90	.75	.65	.55	.50
<b>New Dawn.</b> Everblooming, fragrant, blush-pink.					
No. 1	.80	.65	.60	.55	.50
No. 1½		.55	.50	.45	.40

## Perennial Plants

All field grown unless marked otherwise.  
No Less Than 5 Plants of a Variety Sold.

	5-24 Each	25-249 Each	250 up Each
<b>ASTILBE (Spirea)</b>			
<b>Fanal.</b> Good foliage. Best deep red—18"	\$.35	\$.30	\$.28
<b>Peach Blossom.</b> Dense plumes of peach blossom pink.			
Lush foliage	.35	.30	.28
<b>CONVALLARIA majalis.</b>			
Excellent large flowering strain.			
Nursery Grown Clumps	.25	.20	.18
<b>DICENTRA spectabilis — 24"</b>			
May-June. True old fashioned variety.			
3 to 5 eye	.37	.32	.30
<b>FUCHSIA "Senorita"</b>			
Rich red and purple flowers. Hardier, more compact, more floriferous than magellanica. Cole's introduction — 2½'			
Field Grown	.40	.33	.30
<b>PEONY officinalis rubra.</b>			
Free flowering, very double, very bright. In bloom before Decoration Day.			
3 to 5 eye	.60	.55	.53
<b>POLYGONUM dwarf reynoutria.</b> Pink flowers. Gorgeous Fall coloring. Excellent ground cover.—12"	.30	.25	.22
<b>TEUCRIUM chamaedrys.</b>			
Lustrous evergreen foliage. Rosy flowers. Excellent for edging pools, beds, and walks—resembling dwarf boxwood.			
Very hardy — 12"	.25	.18	.17
<b>TROLLIUS</b>			
Mixed varieties	.27	.22	.20
<b>VINCA</b> — See Vines			
<b>VIOLET ROYAL ROBE.</b>			
Giant violets on long stems, sweet scented. Profuse in spring and fall	.20	.15	.14

# Fruit

## BEARING AGE FRUIT TREES

	1-4 Each	5 up Each
<b>APPLE. Dwarf.</b>		
6 year, Bearing Age	\$10.00	\$ 9.00
McIntosh Red Delicious Yellow Transparent		
<b>APRICOT Hungarian.</b> Hardest—most dependable.		
2", Bearing Age	8.50	7.50
<b>CHERRY. Black Tartarian</b>		
2 to 2½" B&B Bearing Age	25.00	20.00

## TREE FRUIT — SPRING ONLY

	1-9 Each	10 up Each
<b>APPLE. Standard</b>		
2 year, 1/16" up	\$ 1.00	\$ .80
McIntosh Red Delicious		
Staymans Yellow Transparent		
<b>CHERRY. 1 year 1/16 to 1/16"</b>	1.30	1.10
Black Tartarian Montmorency Sour		
Napoleon (Queen Ann)		
<b>PEACH. 1/16 to 1/16"</b>	.90	.75
Cumberland Hale Haven		
Golden Jubilee Elberta		
<b>PEAR. Dwarf Bartlett</b>		
1/16 to 1/16"	1.30	1.10
<b>Standard Bartlett</b>		
1/16" up	1.20	1.00
<b>PLUM. Stanley</b>		
1/16" up	1.20	1.00

# Small Fruit

## SPRING ONLY

	Per 25	Per 100	Per 250	Per 500
<b>ASPARAGUS. Mary Washington</b>				
2 year No. 1	\$1.50	\$ 3.50	\$ 8.00	\$15.00

## GRAPE VINES

	1-9 Each	10-29 Each	30 up Each
Concord (Blue) 2 yr. No. 1	\$ .20	\$ .14	\$ .12
Niagara (White) 2 yr. No. 1	.20	.16	.14

## RASPBERRIES

	Per 10	Per 25	Per 100
New Logan (Black) No. 1 Tips	\$1.35	\$2.20	\$6.50
Latham (Red) No. 1	1.60	2.70	8.00

# Trees — Collected

Locally collected under strict supervision so that they remain fresh to delivery.

Straight, well headed, good roots; quite closely resembling nursery grown trees. Under good management this stock will produce with satisfaction.

Varieties:

**ACER rubrum.** Red Maple

**ACER saccharum.** Sugar Maple

**QUERCUS palustris.** Pin Oak

**TILIA americana.** American Linden

Grades:

A-1—Double graded in our storage for select trees.

4 to 6' size is medium branched — Balance well branched.

L. O. S.—Lining Out Stock. 4 to 6' and 6 to 8' sizes are whips or light branched; balance are light to medium branched.

	30-99 Each	100 up Each
Sizes:		
4 to 6' L. O. S. ....	\$ 1.00	\$ .75
4 to 6' A-1 .....	1.25	1.00
6 to 8' L. O. S. ....	1.25	1.00
6 to 8', $\frac{3}{4}$ to 1" A-1 .....	2.00	1.65
8 to 10' L. O. S. ....	1.85	1.50
8 to 10', 1 to 1 $\frac{1}{4}$ " A-1 .....	3.00	2.50
10 to 12' L. O. S. ....	2.75	2.25
10 to 12', 1 $\frac{1}{4}$ to 1 $\frac{1}{2}$ " A-1 .....	3.75	3.25
1 $\frac{1}{2}$ to 1 $\frac{3}{4}$ " A-1 .....	4.75	4.25
1 $\frac{3}{4}$ to 2" A-1 .....	6.25	5.50
2 to 2 $\frac{1}{2}$ " A-1 .....	8.50	7.50
2 $\frac{1}{2}$ to 3" A-1 .....	11.50	10.00

## SPECIALTIES

### Sales Yard - Mail Order

We have many unlisted items and sizes valuable for special sale uses. Please ask for **Special Quotations** mentioning quantities and varieties needed.



# Lining Out Stock

Each T—one transplanting      S—seedlings

## TREES

		50-199 Each	200 up Each
<b>ACER palmatum.</b> Japanese Maple			
1000 6 to 10 in. 2 yr. T	.....	\$ .12	\$ .10
<b>AESCULUS pavia.</b> Red Buckeye			
150 9 to 15 in. 3 yr. S.	.....	.45	.40
<b>EVODIA danielli.</b> Korean Evodia			
200 12 to 24 in. S.	.....	.28	.25
<b>PHELLODENDRON amurense.</b> Amur Corktree.			
500 12 to 24 in. S.	.....	.18	.15
<b>POPULUS nigra italica.</b> Lombardy Poplar.			
Suitable for sale as a hedging grade.			
2000 4 to 6 ft. 1 yr. H.W.C.	.....	.20	.15
<b>QUERCUS borealis (rubra).</b> Northern Red Oak			
3 yr., root-pruned at 2-year-old			
700 18 to 24 in.	.....	.18	.14
1000 2 to 3 ft.	.....	.22	.18
1200 3 to 4 ft. branched	.....	.40	.35
300 4 to 5 ft. branched	.....	.80	.75
<b>QUERCUS palustris.</b> Pin Oak			
20,000 6 to 12 in. S.	.....	.08	.06

## SHRUBS

		50-199 Each	200 up Each
<b>ARONIA arbutifolia.</b> Red Chokeberry			
1500 6 to 12 in. S.	.....	\$ .09	\$ .07
<b>AZALEA mollis.</b> Chinese Azalea.			
Fine, bushy plants, many suitable for immediate sale			
in cans or pots.			
600 8 to 12 in. 2 yr. TT branched	.....	.28	.25
1000 12 to 15 in. 2 yr. TT branched	.....	.38	.35
<b>BERBERIS koreana.</b> Korean Barberry.			
3000 6 to 12 in. S.	.....	.10	.08
<b>BERBERIS thunbergi.</b> Japanese Barberry.			
8000 6 to 10 in. S.	.....	.05	.03
<b>CLETHRA barbinervis.</b> Tree Clethra.			
800 6 to 10 in. T.	.....	.17	.15
<b>CORNUS racemosa.</b> Gray Dogwood.			
5000 9 to 15 in. S.	.....	.08	.06
<b>CORYLUS americana.</b> American Filbert.			
1500 10 to 15 in. S.	.....	.14	.12
<b>LIGUSTRUM regelianum.</b> Regel Privet.			
10,000 9 to 15 in. T.	.....	.14	.12

## LINING OUT STOCK—SHRUBS — Continued

			50-199 Each	200 up Each
<b>LIGUSTRUM vicaryi.</b> Golden Privet.				
3000	5 to 9 in. T.	.....	\$ .16	\$ .14
<b>ROSA rugosa.</b> Rugosa Rose.				
2000	9 to 15 in. S.	.....	.09	.07
<b>SYRINGA vulgaris.</b> Common Purple Lilac.				
1500	6 to 12 in. S.	.....	.08	.06
<b>VIBURNUM dentatum.</b> Arrowwood.				
12,000	8 to 12 in. 2 yr. S.	.....	.10	.08
<b>V. dilatatum.</b> Linden Viburnum.				
1000	8 to 12 in. 2 yr. S.	.....	.14	.12
<b>V. lentago.</b> Nannyberry.				
8000	8 to 15 in. 2 yr. S.	.....	.10	.08
<b>V. opulus.</b> European Cranberrybush.				
6000	8 to 15 in. 2 yr. S.	.....	.10	.08
<b>V. trilobum.</b>				
12,000	8 to 15 in. 2 yr. S.	.....	.10	.08

## EVERGREENS

We've never been able to buy evergreen liners to match any of these offered. They're grown under irrigation on light sandy-gravel soil, the kind that produces the finest root system, and are absolutely guaranteed to please.

			50-199 Each	200 up Each
<b>CHAMAECYPARIS p. magnifica.</b> Magnifica Falsecypress.				
400	12 to 15 in. 2 yr. TT	.....	\$ .45	\$ .40
<b>C. plumosa aurea.</b> Goldplume Falsecypress.				
400	12 to 15 in. 2 yr. TT	.....	.38	.35
<b>C. plumosa compacta aurea.</b> Dwarf Goldplume Falsecypress.				
1000	8 to 12 in. 2 yr. TT	.....	.45	.40
<b>C. plumosa Gold Dust.</b> New Goldplume Falsecypress.				
400	9 to 12 in. 2 yr. TT	.....	.45	.40
<b>JUNIPERUS chinensis pfitzeriana.</b> Silver Blue.				
2400	10 to 15 in. 3 yr. TT	.....	.55	.50
1000	2¼ in. pots 1 yr.	.....	.25	.22
<b>J. horizontalis plumosa.</b> Andorra Creeping Juniper.				
250	10 to 15 in. 2 yr. TT	.....	.45	.40
<b>J. sabina.</b> Savin Juniper.				
500	10 to 15 in. 2 yr. TT	.....	.45	.40
<b>TAXUS c. capitata</b> (from seed). Upright Yew.				
4000	9 to 12 in. 3 yr. T	.....	.50	.45
<b>T. c. wilsoni.</b> Wilson Yew.				
400	10 to 15 in. 3 yr. TT	.....	.55	.50
<b>T. m. browni.</b> Brown Yew.				
500	9 to 15 in. 3 yr. TT	.....	.45	.40
<b>T. m. hatfieldi.</b> Hatfield Yew.				
500	9 to 12 in. 3 yr. TT	.....	.50	.45

			50-199 Each	200 up Each
<b>THUJA occidentalis nigra.</b>	Dark Green American Arborvitae			
700	12 to 15 in.	2 yr. TT	\$ .40	\$ .37
<b>T. o. pyramidalis.</b>	Pyramidal Arborvitae.			
1000	12 to 15 in.	2 yr. TT	.40	.37
<b>T. o. woodwardi.</b>	Woodward Globe Arborvitae.			
700	10 to 14 in.	2 yr. TT	.40	.37
<b>TSUGA canadensis.</b>	Canada Hemlock.			
1000	12 to 18 in.	4 yr. TT	.45	.40

**BROADLEAVED EVERGREENS**

<b>ILEX crenata convexa.</b>	Convexleaf Japanese Holly			
1800	6 to 12 in.	2 yr. TT	.50	.45
<b>I. c. latifolia.</b>	Bigleaf Japanese Holly.			
2000	12 to 18 in.	2 yr. TT	.50	.45
<b>I. c. rotundifolia.</b>	Roundleaf Japanese Holly			
400	9 to 15 in.	2 yr. TT	.50	.45
<b>I. glabra.</b>	Inkberry Holly.			
450	10 to 15 in.	2 yr. TT	.45	.40

**SALES YARD — POTTED EVERGREENS**

**Mail Order Sizes**

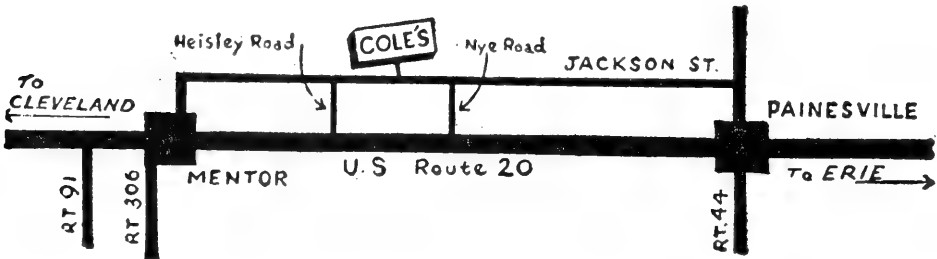
Junior size Evergreens and Evergreen Shrubs are finding ready acceptance in cans or Cloverset Pots. Cole's plants are made to order for this trade. Our more particular customers order the top part of the grade at 33 1/3% additional.

**POTTED ROSES**

By experience, our customers invariably find Cole's "Vitality Packed" number 1 1/2 Roses produce, when potted, to great satisfaction. In fact fully up to that of ordinary number 1 plants. We suggest that you affect this saving.

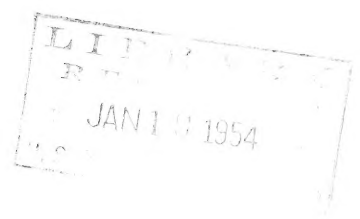
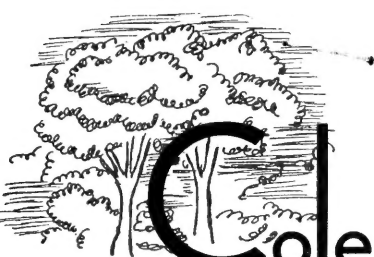
INDEX

	Pages
Balling Schedule — inside rear cover	
Deciduous Shrubs . . . . .	12-22
Evergreens . . . . .	23-27
Evergreen Shrubs . . . . .	27-30
Fruit Trees and Plants . . . . .	35
Lining Out Stock . . . . .	37-39
Roses . . . . .	31-34
Perennial Plants . . . . .	34
Terms of Sale — inside front cover	
Trees . . . . .	1-11
Trees Collected . . . . .	36
Vines . . . . .	30



AN INVITATION

You're always welcome at Cole's new home. We are located East of Cleveland, halfway between Mentor and Painesville, on Jackson street. U. S. Route 20 passes 1 block south of our office.



**Cole nursery company**

• NURSERYMEN SINCE 1881

TELEPHONE 2-3121

W. Jackson St. • Painesville, Ohio

January 16, 1954

Library  
U. S. Dept. of Agriculture  
Washington 25, D. C.

Gentlemen:

We have received your request for a copy of our trade catalog and have mailed under separate cover a copy of the Fall, 1953 edition.

We note you say that this is available to the public for reference use. The only catalog we publish is one meant only for members of the nursery trade and contains wholesale trade prices only. For this reason, we do not care to have it available to the general public and shall appreciate it if it is not made so.

Your name is being put on our permanent mailing list.

Yours very truly,

THE COLE NURSERY COMPANY

*Wm. D. Cole*  
Wm. D. Cole

WDC:EGJ

*"Everything that's Good and Hardy"*



# BALLING SCHEDULE

In this catalog where ball sizes are shown, viz., (15" Ball), etc. this is the approximate size supplied. If larger or smaller balls are required, charge will be adjusted to conform to following schedule.

Where balling is shown as "Extra" or where balls are required on shrubs, trees, and plants not catalogued "Balled (B&B)", add to listed price according to the following schedule.

## SHRUBS — FLOWERING TREES

Ball Size	Wt. Lbs.		1 Each	2 to 4 Each	5 to 19 Each	20 & up Each
10 x 10"	32	1½ to 2	\$ .90	\$ .80	\$ .70	\$ .65
11 x 10"	38		1.10	.95	.85	.75
12 x 11"	47	2 to 3	1.20	1.05	.95	.85
13 x 11"	58	3 to 4	1.50	1.35	1.25	1.15
14 x 12"	80		1.85	1.70	1.55	1.45
15 x 12"	90	4 to 5	2.30	2.10	1.90	1.75
16 x 13"	110	5 to 6	2.80	2.55	2.35	2.15
17 x 13"	130		3.40	3.10	2.80	2.60
18 x 14"	160	6 to 7	4.00	3.70	3.40	3.10
20 x 15"	210	7 to 8	5.50	5.00	4.65	4.25
22 x 16"	270	8 to 10	7.25	6.60	6.00	5.60

## SHADE TREES

20 x 15"	210	1¼ to 1½"	5.50	5.00	4.65	4.25
22 x 16"	270	1½ to 1¾"	7.25	6.60	6.00	5.60
24 x 17"	340	1¾ to 2 "	9.60	8.80	8.00	7.30
26 x 18"	450	2 to 2½"	12.00	11.00	10.10	9.20
30 x 20"	680	2½ to 3 "	17.00	15.50	14.30	13.00
33 x 22"	880	3 to 3½"	22.00	20.00	18.00	16.50
36 x 23"	1100	3½ to 4 "	27.50	25.00	22.50	20.50
40 x 25"	1500	4 to 4½"	34.50	31.50	28.50	26.00
44 x 27"	2000	4½ to 5 "	42.50	39.00	35.50	32.50
48 x 29"	2600	5 to 5½"	52.50	48.00	44.00	40.00
52 x 30"	3200	5½ to 6 "	63.00	58.00	53.00	48.50
56 x 31"	3900	6 to 6½"	76.00	70.00	64.00	58.50
60 x 32"	4800	6½ to 7 "	93.00	85.00	78.00	71.00
64 x 33"	5600	7 to 7½"	112.00	102.00	93.00	85.00
68 x 34"	6500	7½ to 8 "	138.00	126.00	115.00	105.00

Ball sizes, weights, etc. are only approximate as varieties and soil cause them to vary.

Prices include loading on trucks. Car loading on "Tree" sizes entails extra costs.

Platforms, if required, will be charged extra.

